

# PROGRAM BOOK

## 25<sup>th</sup> INTERNATIONAL POSTGRADUATE RESEARCH CONFERENCE (IPRC) 2025

“DIGITAL TRANSFORMATION IN GREEN AND  
SUSTAINABLE INNOVATION”

Organized by



UNIVERSITY OF  
**KELANIYA**

Faculty of  
Graduate Studies



# **The 25<sup>th</sup> International Postgraduate Research Conference (IPRC) - 2025**

**“Digital Transformation in Green and  
Sustainable Innovation”**

## ***Conference Program***

**13<sup>th</sup> November 2025**



**Faculty of Graduate Studies  
University of Kelaniya, Sri Lanka**



## About IPRC 2025

The International Postgraduate Research Conference 2025 of the Faculty of Graduate Studies is a multidisciplinary conference that focuses on addressing issues and emerging concepts in various domains, including Science, Computing, Technology, Mathematics, Medical Sciences, Accounting, Business and Management Studies, Humanities, Social Sciences, Digital Learning, and Multidisciplinary Studies. The event will provide a platform for practitioners, academics, policymakers, researchers, and postgraduate students to share their experiences and expertise through the presentation of high-quality research.

The conference this year will include a keynote address by **Prof. Piergiuseppe Morone (Full Professor of Economic Policy, University of Rome Department of Law and Economics)**, followed by four plenary sessions.

- **Plenary Session One: Characterizing Patterns Associated with Airborne Microbial Communities in Forest and Grassland Ecosystems**

**Prof. Jane E. Stewart**, an Associate Professor of Plant Pathology at the College of Agricultural Sciences, Colorado State University, USA, holds a PhD from Washington State University, an MS from the University of Vermont, and a BS from the University of Oregon.

- **Plenary Session Two: Igniting Research Excellence: Building the Next Generation University for Global Impact**

**Prof. Janaka Yasantha Ruwanpura**, a Professor from the Schulich School of Engineering, Department of Civil Engineering, University of Calgary, Canada, holds a PhD in Construction Engineering and Management from the University of Alberta, an MSc in Construction Management from Arizona State University, and a BSc (Hons) in Quantity Surveying from the University of Moratuwa, Sri Lanka.

- **Plenary Session Three: Artificial Intelligence in Chemistry Research: Transforming Discovery, Design, and Education**

**Prof. Channa De Silva**, a Professor of Chemistry and Head of the Department of Chemistry and Physics at Western Carolina University, USA. Holds a PhD in Chemistry from the University of Arizona and a BS in Chemistry from the University of Kelaniya, Sri Lanka.

- **Plenary Session Four: Rendition of Similar Ragas in North Indian Classical Music**

**Dr. Rajesh Shah**, a Professor of Sitar in the Department of Instrumental Music, Faculty of Performing Arts, Banaras Hindu University, India. Holds a PhD and Master of Music from BHU, Varanasi, and a Bachelor of Commerce from Gorakhpur University, India.



## Message from the Vice-Chancellor



It is with great pleasure that I write this message of felicitation for the 25<sup>th</sup> Annual International Postgraduate Research Conference (IPRC), organized by the Faculty of Graduate Studies, University of Kelaniya. This is the flagship research conference of our University, a forum for researchers and scholars to share knowledge, information, exchange experiences, to present innovative concepts and research.

Celebrating its Silver Jubilee this year, the IPRC has consistently demonstrated our University's strong commitment to promoting research excellence. This year's theme of Digital Transformation in Green and Sustainable Innovation aims to inspire new perspectives on how digital transformation can drive environmentally responsible and inclusive growth.

As in past years, the conference will be conducted under four tracks:

1. Science, Technology, Engineering, Mathematics, and Medicine
2. Accounting and Business Management
3. Humanities and Social Sciences
4. Multidisciplinary Studies

As the University of Kelaniya expands its offering of postgraduate programs, with particular attention to multi-disciplinary studies and the promotion of interdisciplinary research, we strive to nurture the next generation of scholars who will contribute to the sustainable development of our country. Our vision of digital transformation of our University echoes the national vision of digital transformation of our country's economy. We hope that all those who participate in IPRC 2025 share our desire to embark on this promising and exciting journey, which also brings its own challenges.

I thank the Dean of the Faculty of Graduate Studies, Snr. Prof. Priyani Paranagama, the Deputy Registrar / FGS Mr. Lakmal Wijeratne, the Senior Assistant Bursar / FGS Ms. Sathishka Gonapeenuwala, and the conference Organizing Committee, for all the hard work that they have put into organizing this event. I would also like to thank the researchers, reviewers, editors, and other academics who contributed in numerous ways to ensure the success of this conference.

**Senior Prof. Nilanthi Renuka de Silva**

Vice-Chancellor

University of Kelaniya



## Message from the Dean of the Faculty of Graduate Studies



It is with great pleasure that I welcome you to the International Postgraduate Research Conference (IPRC) 2025, hosted by the Faculty of Graduate Studies at the University of Kelaniya. This year's conference is particularly special as we commemorate the silver jubilee, marking a quarter-century of commitment to advanced research, academic excellence, and knowledge dissemination.

The theme of IPRC 2025, "Digital Transformation in Green and Sustainable Innovation," reflects our dedication to addressing contemporary global challenges through cutting-edge research and interdisciplinary collaboration. The conference provides a distinguished platform for postgraduate researchers, scholars, and practitioners from around the world to present their work, exchange ideas, and foster innovation that contributes meaningfully to sustainable development and technological advancement.

As the oldest and most pioneering research conference at the University of Kelaniya, IPRC has successfully held 25 consecutive annual conferences, and continues to serve as a flagship event in our academic calendar. This milestone is a testament to the unwavering commitment of the Faculty of Graduate Studies to encourage advanced research, support academic inquiry, and cultivate a vibrant intellectual community.

IPRC 2025 symbolizes the vision and mission of the Faculty of Graduate Studies, where knowledge is recognized as a powerful tool to affect change. Through promoting analytical skills, openness to new ideas, and research excellence, FGS empowers its graduates to make a meaningful impact in society. The conference is an opportunity to showcase innovative postgraduate research, engage in thoughtful discussions, and build collaborations that will shape the future of green and sustainable innovation.

I extend my sincere gratitude to all participants, keynote speaker, plenary speakers, presenters, and organizers for contributing to this landmark event. Let us come together to make IPRC 2025 a celebration of academic excellence, global collaboration, and transformative research.

**Senior Prof. P.A. Paranagama**

Dean

Faculty of Graduate Studies

University of Kelaniya

Sri Lanka





## Message from the Chairman of the Research Council



It is with great pleasure I write this message to the International Postgraduate Research Conference (IPRC) 2025 organized by the Faculty of Graduate Studies, University of Kelaniya. Since the first conference in 2000, the Annual Research Symposium of the Faculty of Graduate Studies has been an important event of the University Research Calendar. The IPRC 2025 marks a significant milestone, being the silver jubilee edition of this flagship postgraduate research event.

IPRC 2025 is truly a multidisciplinary research symposium with dedicated tracks for Science, Technology, Engineering, Mathematics, and Medicine; Accounting and Business Management; Humanities and Social Sciences; and Multidisciplinary Studies. It provides an international platform for researchers to share their findings, exchange ideas, and explore innovative solutions for sustainable development.

This year's theme, 'Digital Transformation in Green and Sustainable Innovation,' reflects how research can be transformative and help to foster a sustainable ecosystem. I am confident that the Conference will generate new ideas, methodologies, and collaborations to uplift the research environment, culture, and output of the University.

I wish all the very best for the Faculty of Graduate Studies and IPRC 2025.

**Professor Sachith Mettananda**

Chairman

Research Council

University of Kelaniya



## Profile of the Keynote Speaker – Prof. Piergiuseppe Morone

*Full professor of Economic Policy, Unitelma Sapienza – University of Rome, Department of Law and Economics, Roma, Italy*

*Ph.D., Science and Technology Policy – University of Sussex, UK, M.A., Development Economics – University of Sussex, B.A. (cum laude), Economics – University of Bari, Italy*



Piergiuseppe Morone is a Full Professor of Economic Policy at Unitelma Sapienza with a strong interest in green innovation and sustainable circular bioeconomy, pushing his research at the interface between innovation economics and sustainability transitions, an area of enquiry that has attracted growing attention over the last decade. His work regularly appears in prestigious journals in innovation and environmental economics. In 2023, published with Cambridge University Press a textbook titled “The Circular Bioeconomy: Theories and Tools for Economists and Sustainability Scientists”.

He is the coordinator of the Bioeconomy in Transition Research Group (BiT-RG) and the director of the School of Sustainability Studies and Circular Economy (SUSTAIN). Moreover, he is/was involved in several European projects (including: H2020, BBI-JU, Life, Erasmus+, COST, Horizon Europe and CBE-JU) acting as scientific coordinator, vice-chair and WP Leader. He was an Economic Advisor to the Italian Minister of the Environment, Land and Sea Protection, till February 2021. Piergiuseppe is Editor in Chief of Societal Impacts (ELSEVIER) and Associate Editor of several other prestigious journals.

Since April 2022, Piergiuseppe has been the vice-chair of the Circular Bio-based Europe Joint Undertaking (CBE JU) Scientific Committee.

### **Abstract of the Keynote Speech: Sustainability transition towards a circular bioeconomy: certifying production and promoting sustainable consumption**

Scientific opinion and public interest are calling for societal transformations in the direction of sustainability. The role of standards, certifications and green labels in boosting the transition is gaining momentum worldwide. Indeed, certification schemes and green labels play a predominant role in orienting consumption towards sustainable products, rewarding at the same time more sustainable production models.

Driving and monitoring the transition toward a sustainable economy requires sound environmental and social indicators. The capacity to demonstrate the sustainability of bio-based products is crucial for promoting the full deployment of a circular bio-based economy, and for boosting new products' market uptake. Hence, there is a growing need



to deliver methodological guidance to companies on assessing the sustainability of their innovative and claimed sustainable bio-based products. From a consumers' point of view, the diffusion of certified bio-based products may prove effective for overcoming economic challenges related to the implementation of the circular bioeconomy. Agreed upon sustainability standards are necessary to make certification an informative tool for consumers to encourage them to make green purchases. In fact, bio-based products combined with proper management at the end of their life cycle represent the concept of a circular bioeconomy. Certification therefore becomes the visible output to consumers of the actual sustainability of these products.

However, the multiplicity of definitions is a significant barrier to the spread of sustainable practices, creating confusions among producers and consumers, and favoring greenwashing. Only an adequate harmonization of rules can guarantee the occurrence of a real sustainability transitions, avoiding greenwashing practices, which might have disruptive effect on the needed transition.





## **Plenary Speaker - Prof. Janaka Yasantha Ruwanpura**

*Schulich School of Engineering, Department of Civil Engineering, University of Calgary,  
Canada*

*Ph.D., Construction Engineering and Management – University of Alberta, Canada (2001)*

*M.Sc., Construction Management – Arizona State University, USA (1997)*

*B.Sc. (Hons), Quantity Surveying – University of Moratuwa, Sri Lanka (1992)*



Professor Janaka Yasantha Ruwanpura is a highly respected academic, researcher, and global leader in construction engineering, project management, and international higher education. He is currently a Professor in the Department of Civil Engineering at the Schulich School of Engineering, University of Calgary. He recently concluded over 11 years of service as the Vice-Provost and Associate Vice-President Research (International), during which he significantly advanced the university's international engagement and reputation.

During his tenure as Vice-Provost International, Professor Ruwanpura played a pivotal role in shaping and implementing the University of Calgary's international strategy. His leadership led to the creation of several collaborative degree programs, research partnerships in countries like China and Mexico, and the acquisition of more than \$57 million in research and infrastructure funding. He also secured over \$25 million in international development grants and more than \$5 million for student research internships through MITACS. Notably, he became the first Canadian and non-American to be elected Executive Chair (2019–2021) of the Commission of International Initiatives of the Association of Public and Land-Grant Universities (APLU). Professor Ruwanpura's work has earned him numerous prestigious accolades, including the Top 25 Canadian Immigrant Award (2022) and fellowships with the Canadian Academy of Engineering (FCAE), the Engineering Institute of Canada (FEIC), the Canadian Society for Civil Engineering (FCSCE), and the National Academy of Construction, USA (NAC). In 2022, he was also recognized as a Gold Seal Certified Professional by the Canadian Construction Association.

### **Abstract of the Plenary Session One: Igniting Research Excellence: Building the Next Generation University for Global Impact**

This plenary will present an evidence-based eleven-point framework for advancing institutional research excellence, drawing on global best practices and implementation experience from leading universities. The framework emphasizes transdisciplinary research clusters, targeted funding strategies, publication culture, international collaborations, and industry-engaged innovation. It also highlights internal enablers such as performance-linked incentives, structured research support, and the role of postdoctoral and community engagement. Using this framework, the presentation proposes a tailored roadmap for developing a comprehensive Research Strategy for the University of Kelaniya. Key components include aligning research with national and global priorities, building flagship institutes, and strengthening partnerships for co-funded, high-impact research. The session will demonstrate how strategic planning and structured implementation can transform research ecosystems, improve institutional rankings, and position universities as regional leaders in innovation, knowledge creation, and sustainable development.



## Plenary Speaker - Prof. Channa De Silva

*Professor of Chemistry, Head of the Department, Department of Chemistry & Physics,  
Western Carolina University, USA*

*Ph.D., Chemistry - University of Arizona  
B.S., Chemistry - University of Kelaniya, Sri Lanka*



Dr. Channa De Silva is a Professor and Department Head of Chemistry & Physics at Western Carolina University, USA. He completed his B.S. degree in Chemistry with First-Class Honors at the University of Kelaniya, Sri Lanka, in 2000 and earned his Ph.D. in Chemistry with a GPA of 4.0 from the University of Arizona, USA, in 2007. From 2008 to 2010, he worked as a Research Associate at the Pacific Northwest National Laboratory, in Materials Science and Engineering at the University of Arizona, and the Bio5 Institute at the University of Arizona, USA. His research focuses on developing metal-based nanomaterials for biotechnological applications and conducting computational studies of materials containing lanthanide and actinide metals.

Dr. De Silva has received numerous teaching and research awards, including the University of North Carolina Board of Governors Award for Excellence in Teaching, USA (2025), the Brinson Honors College's Faculty and Staff Excellence Award, Western Carolina University (2025), the Chancellor's Distinguished Teaching Award (2025), Winner, FACULTY 3 Minute Research Talk (3MR), Western Carolina University, USA (2025), Teaching Award from the College of Arts & Sciences at Western Carolina University (2022), Visiting Faculty Program Scholar from the U.S. Department of Energy (DOE) (2021), SoCon Faculty Member of the Year Award (2019), and Innovative Scholarship Award (2017).

In his free time, he enjoys playing music, including Sri Lankan music, northern Indian music, and an American folk genre called Appalachian music.

### **Abstract of the Plenary Session Two: Artificial Intelligence in Chemistry Research: Transforming Discovery, Design, and Education**

Artificial Intelligence (AI) is rapidly reshaping the landscape of chemical research and education, offering transformative capabilities across molecular design, reaction prediction, process optimization, and teaching. Recent advancements highlight AI's growing role in both undergraduate and graduate-level chemistry, with applications spanning drug discovery, materials science, and sustainable chemical engineering. AI-driven platforms such as ChemCopilot and IBM RXN are streamlining retrosynthesis planning, reaction yield prediction, and real-time process monitoring. Large Language Models (LLMs), including finetuned systems like GVIM, are being integrated into intelligent research assistants capable of molecular visualization, SMILES string processing, and literature retrieval.

These tools not only enhance research productivity but also democratize access to advanced computational methods. Educationally, AI's integration into chemistry curricula is gaining momentum. Workshops and teacher training programs are fostering Technological Content Knowledge (TCK), preparing educators to bridge the gap between scientific innovation and classroom instruction. The 2025 Nobel Prize in Chemistry, awarded for AlphaFold's protein structure prediction, underscores AI's interdisciplinary impact and its relevance to future career



pathways. Despite its promise, challenges remain in data quality, model interpretability, and ethical deployment. Addressing these issues is essential to ensure scientifically sound and socially beneficial outcomes. This abstract invite discussion on the strategic incorporation of AI into chemistry research and education, emphasizing its potential to accelerate discovery, enhance pedagogy, and prepare students for AI-driven scientific careers.

My own experiences in digital transformation initiatives have underscored the importance of combining technological, social, and economic insights. Gender equality is a crucial focus, especially regarding workforce participation. Through initiatives like 'She Returns,' which supports women re-entering the workforce after maternity leave, we see how multidisciplinary research can solve real-world challenges by bridging gaps in productivity and equality. Academia plays a pivotal role in encouraging cross-disciplinary innovation. However, achieving this requires shifting from specialization to integration, breaking institutional barriers, and promoting collaboration. It is only through collective effort where technologists, economists, sociologists, and policymakers join forces that we can shape a prosperous future. In conclusion, Sri Lanka's path forward embraces innovation and research that transcends boundaries. Together, we can build a resilient economy driven by inclusive growth, ensuring that research not only advances knowledge but also transforms lives and creates lasting societal impact.



## Plenary Speaker - Prof. Jane E. Stewart

*Associate Professor of Plant Pathology, EIC Forest Pathology, Dept of Agricultural Biology  
Colorado State University, Fort Collins, Colorado, USA*

*Ph.D., Plant Pathology - Washington State University  
MS, Forestry - University of Vermont  
BS, Biology - University of Oregon*



Dr. Jane E. Stewart is an Associate Professor of Plant Pathology in the Department of Agricultural Biology at Colorado State University in Fort Collins, Colorado, USA. Her research focuses on forest, shade, and fruit trees, addressing critical issues in tree health through the lens of plant pathology. Dr. Stewart brings extensive expertise in fungal biology, population genetics and genomics, molecular diagnostics, and the management of plant pathogens particularly invasive and emerging pathogens affecting trees.

Over the course of her career, Dr. Stewart has published more than 100 scholarly manuscripts spanning various forest and tree crop pathosystems. Her research emphasizes the speciation of tree pathogens and explores host-pathogen interactions at multiple levels, from the microbiome to the molecular scale. She is also actively engaged in developing practical management strategies to combat tree diseases and enhance sustainable forestry and agriculture.

In addition to her research, Dr. Stewart teaches undergraduate and graduate courses at Colorado State University. Her undergraduate course, Tree Health and Management, covers a wide array of tree diseases and insect pests along with their management practices. She also teaches a graduate-level course on Fungal Biology and Genetics, sharing her deep knowledge and research experience with the next generation of plant pathologists.

Dr. Stewart's research program has a global focus, aiming to improve understanding of the biology, ecology, genetics, and management of emerging tree pathogenic fungi. She currently serves as Editor-in-Chief of the internationally recognized journal Forest Pathology, reflecting her leadership and influence in the field.

### **Abstract of the Plenary Session Three: Characterizing Patterns Associated with Airborne Microbial Communities in Forest and Grassland Ecosystems**

Understanding how and what types of microorganisms move through the air is important for early warning detection systems for human and ecosystem health. The atmosphere harbors a diverse and dynamic reservoir of microorganisms, yet their distribution, especially for fungi, in the atmosphere and response to environmental variation remains a subject of ongoing investigation. In this study, we compared airborne bacterial and fungal communities in subalpine forest and steppe grassland sites, over diel, vertical, and seasonal gradients. Air samples were collected at three heights over four months at the subalpine forest with concurrent sampling in the steppe grassland during two of those months. We observed that fungal communities had



greater site-specific variability and sensitivity to environmental factors than bacterial communities. This was most apparent in the subalpine forest, where vertical stratification and diel cycles significantly structured microbial diversity. In comparison, bacterial communities were temporally dynamic but showed weaker responses to local environmental conditions and minimal site-level differences. This may indicate broader dispersal and a ubiquitous set of bacterial taxa. Environmental drivers such as atmospheric moisture and air pressure influenced microbial beta-diversity in the subalpine forest, while air temperature and wind speed impacted diversity in the steppe grassland, again highlighting ecosystem-specific responses. Despite compositional differences, a group of shared bacterial and fungal taxa was consistently detected across sites. Most of these shared taxa were detected at greater heights in the subalpine forest. This, along with wind patterns moving eastward from the subalpine forest towards the steppe grassland, indicates potential atmospheric transport between sites, with taxa dispersal being filtered by height. These results underscore the role of ecosystem structure, meteorological conditions, and air mass movement in shaping the aero biome. Our data suggest that airborne microbial communities are shaped by both local emission and long-range atmospheric transport processes.





## Plenary Speaker - Dr. Rajesh Shah

*Professor in Sitar, Department of Instrument, Faculty of Performing Arts, Banaras Hindu University, India*

*Ph.D., Banaras Hindu University, Varanasi, India  
M.Mus., Banaras Hindu University, Varanasi, India  
B.Com., Gorakhpur University, Gorakhpur, India*



Prof. Rajesh Shah is a distinguished artist and academic in the field of Indian Classical Instrumental Music, specializing in the sitar. Born on June 15, 1966, into a culturally rich Gujarati family, he inherited his passion for classical music from his father, Sri Narottam Das Shah. Over the course of his illustrious career, Dr. Shah has established himself as a leading figure in sitar performance, pedagogy, and music composition, contributing significantly to the propagation and preservation of India's classical music heritage.

Currently serving as a Professor in the Department of Instrumental Music at the Faculty of Performing Arts, Banaras Hindu University (BHU), Prof. Shah has also held key academic positions, including Dean of the Faculty and Head of the Department. A Grade 'A' artist of All India Radio and Doordarshan, he is renowned for his solo sitar recitals, jugalbandis (duets), and orchestral compositions, both in India and abroad.

Prof. Shah's musical foundation was shaped by the rigorous training he received under the guidance of Late Sri Govind Raoji Nayak and the late Dr. Ramdas Chakravarti of BHU, followed by advanced tutelage from Pt. Amarnath Mishra of the Banaras Gharana. Deeply rooted in the Saini Gharana tradition, his sitar style is noted for its clarity, creativity, and expressive depth.

An active performer, Prof. Shah has presented concerts and conducted workshops across Europe, Central Asia, the Middle East, and South Asia, including notable appearances in Germany, Austria, Azerbaijan, Kazakhstan, Mauritius, UAE, and Nepal. In addition to his international reach, he is a respected educator who has mentored over 16 Ph.D. scholars and numerous postgraduate students. Many of his disciples now serve as faculty members in reputed universities and cultural institutions worldwide.

His commitment to inclusive education is exemplified by his longstanding work with visually impaired students, whom he has trained in the intricate art of sitar performance. He has also composed and directed several orchestral works specifically for visually impaired musicians, earning recognition at international platforms such as Vienna and across Indian cities.

Prof. Shah has authored the book "Sitar Vigyan: Prayog Evam Shastra" and contributed extensively to academic journals and conference proceedings at both national and international levels. His research interests span from traditional raga interpretation to music therapy, music education, and comparative musicology.



Beyond teaching and performance, he has served on various academic and administrative bodies, including as a member of Boards of Studies and selection committees in universities such as Visva Bharati University, Dr. Ram Manohar Lohia Awadh University, and M.S. University, Baroda. He has also acted as a convener and resource person in numerous interdisciplinary workshops and seminars focused on Indian classical music.

Through his artistic excellence, academic contributions, and inclusive teaching philosophy, Prof. Rajesh Shah continues to be a guiding force in the world of Indian classical instrumental music.

### **Abstract of the Plenary Session Four: Rendition of Similar Ragas in North Indian Classical Music**

North Indian Classical Music, or Hindustani music, is built upon the intricate and deeply aesthetic concept of the raga a melodic framework for improvisation and composition. Each raga is defined by a unique set of notes (swaras), characteristic phrases (pakad), and mood (rasa), which together create a distinct identity. However, within this rich system exists a fascinating phenomenon the presence of similar ragas, whose tonal structures and emotional colors overlap, yet whose renditions must remain distinct through nuanced expression.

Many ragas share the same or nearly identical scales but differ in their treatment, ornamentation, and emphasized notes. For instance, Raga Desh and Raga Khamaj both use the komal nishad (flat seventh) and shuddha nishad (natural seventh), yet their melodic contours and emotional intent diverge significantly. Desh evokes the freshness of monsoon and a feeling of longing, while Khamaj carries a romantic and serene flavor. Similarly, Raga Bhupali and Raga Deshkar share the pentatonic scale (using Sa Re Ga Pa Dha), but the former flows with a lyrical, devotional sweetness, while the latter projects brightness and vigor through sharper tonal emphasis and a more forceful rendition.

The distinction among similar ragas primarily depends on intonation, movement, and emphasis. The vadi (most prominent note) and samvadi (second most prominent note) play a crucial role in shaping the identity of a raga. Ornamentations such as meend (glide), kan swar (grace note), and gamak (oscillation) further add character. The choice of tempo (laya), rhythmic cycle (tala), and mood (bhava) also influences how the listener perceives one raga from another, even when the note structures are similar.

Experienced performers internalize these subtleties through years of training under the guru-shishya parampara. A successful rendition of similar ragas demands deep understanding and restraint, knowing precisely how to explore the raga's potential without encroaching upon the domain of another. The artist's improvisation (vistar, alap, taan) must unfold within the grammar of the chosen raga, revealing its individuality through creativity grounded in discipline.

Thus, the rendition of similar ragas in North Indian classical music exemplifies the art's philosophical depth the coexistence of similarity and uniqueness, structure and freedom. It is this delicate balance that sustains the immense beauty and complexity of the Hindustani raga tradition, allowing it to evolve continuously while preserving its timeless essence.



## **Editorial Board**

### **Conference Chair and Editorial Director**

Senior Professor P.A. Paranagama  
Chair of Chemistry  
Department of Chemistry, Faculty of Science, University of Kelaniya, Sri Lanka

### **Editor in Chief**

Senior Professor N. Jayathilaka  
Department of Chemistry, Faculty of Science, University of Kelaniya, Sri Lanka

### **Editors**

- |                                       |   |  |
|---------------------------------------|---|--|
| Prof. P.A.D.H. Nayana Gunathilaka     | : | Department of Parasitology, Faculty of Medicine,<br>University of Kelaniya, Sri Lanka                                    |
| Prof. Renuka N. Attanayake            | : | Department of Plant & Molecular Biology, Faculty<br>of Science, University of Kelaniya, Sri Lanka                        |
| Prof. M.R.K.N. Yatigammana            | : | Department of Commerce and Financial<br>Management, University of Kelaniya, Sri Lanka                                    |
| Dr. Prabhashini Wijewantha            | : | Department of Human Resource Management,<br>University of Kelaniya, Sri Lanka  |
| Dr. H.A. Kumudu Sumedha<br>Sanjeewani | : | Department of Sociology, University of Kelaniya,<br>Sri Lanka  |
| Dr. Induni Siriwardene                | : | Department of Applied Computing, University of<br>Kelaniya, Sri Lanka  |
| Prof. R.M. Mahinda                    | : | Department of Environmental Management,<br>Faculty of Social Science and Humanities, Rajarata<br>University of Sri Lanka |
| Dr. Anuruddhika Kularathne            | : | Department of Sinhala, Faculty of Humanities,<br>University of Kelaniya, Sri Lanka                                       |

### **Copy Editors**

- |                           |   |  |
|---------------------------|---|--|
| Dr. Mahendra Gunawardane  | : | Department of Microbiology, Faculty of Science,<br>University of Kelaniya, Sri Lanka |
| Ms. H.A. Dilum Rathnamala | : | Department of Humanities, Aquinas College of<br>Higher Studies, Sri Lanka            |

### **Conference Secretary**

Mr. K.B.S.L. Wijeratne  
Deputy Registrar  
Faculty of Graduate Studies, University of Kelaniya, Sri Lanka

### **Editorial Manager and Conference Coordinator**

Ms. D.S.R.E.S. Gunawardhana



## Sessions Chairs

Snr. Prof. N. Jayathilaka

Snr. Prof. S.S. Weligamage

Prof. Ven. Miriswaththe Wimalagnana

Thero

Prof. Channa De Silva

Prof. Deepika Amarasinghe

Prof. Dilma Koggalage

Prof. M.J.M. Razi

Prof. M.R.K.N. Yatigammana

Prof. P.A.S.R. Wickramarachchi

Prof. R.M. Mahinda

Prof. Renuka N. Attanayake

Prof. S.R. Liyanage

Prof. W.A.P.J. Premaratne

Dr. A.M.D.M.B. Abeykoon

Dr. Achala Abeykoon

Dr. Anuradha Jayasinghe

Dr. Anuruddhika Kumari Kularathne

Dr. Chamila Kadigamuwa

Dr. D.D.C. de S. Wanniarachchi

Dr. H.A. Kumudu Sumedha Sanjeewani

Dr. J. Dahanayake

Dr. L.P.N.D. Premarathna

Dr. M.M. Gunawardane

Dr. Madusha Chandrasena

Dr. Mangala Keerthi de Pasqual

Dr. Prabhashini Wijewantha

Dr. Samanthi Jayawardhana

Dr. Vindhya Weerawardhane

Dr. W.A.C. Weerakoon



## Panel of Reviewers

Snr. Prof. N. Jayathilaka	Dr. A.M.D.M.B. Abeykoon
Snr. Prof. P.A. Paranagama	Dr. Achala Abeykoon
Snr. Prof. P.S. Hewageegana	Dr. Amali Nisansala Perera
Snr. Prof. S.S. Weligamage	Dr. Amila Rajapaksa
	Dr. B.M.T. Kumarika
Ven. Prof. Miriswaththe Wimalagnana Thero	Dr. C. Wasanthi Subasinghe
Prof. A.M.T. Amarakoon	Dr. Chamila Siriwardene
Prof. A.W.K. Wasantha Subasinghe	Dr. Chamli Pushpakumara
Prof. B.A.G.G. Mahendra	Dr. Chathura Liyanage
Prof. G.T. Madhubhashini Hewage	Dr. D.L.I.H.K. Peiris
Prof. K.B. Jayawardena	Dr. E.A.D. Anusha Edirisinghe
Prof. K.C.D. Meththananda	Dr. G.N.R. Perera
Prof. K.G.M. Nanayakkara	Dr. H.A. Kumudu Sumedha Sanjeewani
Prof. Kavinda Dayasiri	Dr. K. Manuja N. Perera
Prof. M.D.M.D.W.M.M.K. Yatawara	Dr. K.A. Salvin
Prof. M.J.M. Razi	Dr. K.B. Deepal Gunasena
Prof. M.R.K.N. Yatigammana	Dr. K.K.G. Kodikara
Prof. Menaka Hapugoda	Dr. K.R. Priyantha Tilakasiri
Prof. P. Paranitharan	Dr. L.P.N.D. Premarathna
Prof. P.A.D.H. Nayana Gunathilaka	Dr. Laalitha S.I. Liyanage
Prof. P.A.S.R. Wickramarachchi	Dr. M. Harith Wickramasekara
Prof. R.A. Ishanka Chathurani Karunarathne	Dr. M.M. Gunawardane
Prof. R.A. Seetha Priyangani	Dr. Manoj Jinadasa
Prof. R.M. Mahinda	Dr. Muditha Tissera
Prof. Renuka N. Attanayake	Dr. N.H. Manamperi
Prof. S.K.M.K. Herapathdeniya	Dr. N.L.E. Abeywardena
Prof. S.R. Liyanage	Dr. Nilantha Dinesh Ramanayaka
Prof. Saman Panapitiya	Dr. P.D.C.S. Dharmadasa
Prof. Shyamani Hettiarachchi	Dr. P.M. Thusitha B Wickramasinghe
Prof. T.G.A.N. Chandrasena	Dr. Pavithra K.S. Godamunne
Prof. W.M.D.N. Wijeyaratne	Dr. Prabhashini Wijewantha
Prof. W.V.A.D. Karunarathna	Dr. Prabhath Liyanage
	Dr. Rasika Rajapaksha
	Dr. S.V. Ann Almeida





Dr. Saman Herath	Rev. Udagaladeniye Dhammawimala Thero
Dr. Samanthi Jayawardena	Mr. Anuradha Subasingha
Dr. Subhashini Weerakkody	Mr. E.M. Neil Pushpakumara
Dr. Thiwankee Abeywardena Wickramasinghe	Mrs. L.S. Karunarathna
Dr. V.P.A. Weerasinghe	Mrs. N.M.T. De Silva
Dr. Vindhya Weerawardhana	Mrs. Thushari Gamage
Dr. W.A.C. Weerakoon	Ms. Bimali Wijesundara
Dr. W.A.D.S. Wijethunga	Ms. Dinali Fernando
Dr. W.D. Chanaka Udayanga	Ms. Samadhi D. Dissanayake
Dr. W.V.P. Himalika Ranaweera	

**Welcome to**  
**The 25<sup>th</sup> Conference on Postgraduate Research**  
**International Postgraduate Research Conference (IPRC) -2025**

**Organized by the**  
**Faculty of Graduate Studies**  
**University of Kelaniya**  
**Sri Lanka**



## A Special Note about the Program Book

The University of Kelaniya is the first university to adopt green practices in Sri Lanka successfully. We are moving towards a paperless university. In keeping with the concept, we have decided to offer only the essential information that participants would require in print form. The rest of the information is offered online. Starting from 2016, an online conference management platform was used to organize the conference, which allowed for more efficient planning and improved data management during registration and review.

**The Conference Program Book:** Offers essential information about the conference, session chairs, panel of reviewers, time, date and venue of the conference and the program overview.

**Abstract Volume:** Available online in PDF format and offers author information

Conference-related information is available through the conference website. All online information will be accessible on your smartphone or iPad through the IPRC website. To access the IPRC web page, please scan the QR code.



### General Conference Information:

If you need any technical or internet support, please feel free to contact the conference Event Management Team or the Session Coordinator.

### Photographer Information

An official photographer will be present at the conference



## IPRC 2025 Information

Package Details		Foreign			
		Presenter (Author)		Participant (Author)	Participant Non-Author
		Registered Students of FGS, UOK	Others (Who are not FGS Students)		
Inauguration (Physically)		√	√	√	√
Participation in all sessions (Physically)		√	√	√	√
Conference ID Card		√	√	√	√
Conference Bag		\$10	√	\$10	\$10
Abstract volume (Soft copy)		√	√	√	√
Program book (Soft copy)		√	√	√	√
Certificate		√	√	\$5	√
Refreshments and Lunch		√	√	√	\$15
Standard Registration Fee – 6 <sup>th</sup> November 2025		\$20	\$45	\$25	\$10
Fees for Additional Services		(An additional \$10 should be paid for the conference bag.)		(An additional \$10 should be paid for the conference bag.)	(An additional payment of \$15 for refreshments and lunch, and \$10 for the conference bag, should be made.)
Registration fee Per Additional Abstract	Standard Registration Fee	\$10	\$10	-	-

Package Details		Local			
		Presenter (Author)			Participant Non-Author
		Registered Students of FGS, UoK	Permanent Staff of UoK	External	
Inauguration (Physically)		√	√	√	√
Participation in all sessions (Physically)		√	√	√	√
Conference ID Card		√	√	√	√
Conference Bag		LKR 1,500	LKR 1,500	√	LKR 1,500

Abstract volume (Soft copy)		✓	✓	✓	✓	✓
Program book (Soft copy)		✓	✓	✓	✓	✓
Certificate		✓	✓	✓	LKR 500	✓
Refreshments and Lunch		✓	LKR 2,500	✓	✓	LKR 2,500
Standard Registration Fee – 6 <sup>th</sup> November 2025		LKR 4,000	Free	5,000 LKR	LKR 3,500	LKR 1000
Fees for Additional Services		(An additional LKR 1,500 should be paid for the conference bag.)	(An additional payment of LKR 2,500 for refreshments and lunch, and LKR 1,500 for the conference bag, should be made.)		(An additional payment of 500 LKR for the certificate, and LKR 1,500 for the conference bag, should be made.)	(An additional payment of LKR 2,500 for refreshments and lunch, 1,500 for the conference bag, should be made.)
Registration fee Per Additional Abstract	Standard Registration Fee	LKR 2,000	Free	LKR 2,000	-	-

All registered permanent staff of the University of Kelaniya are cordially invited to participate in the online inauguration and plenary sessions and the in-person parallel academic sessions.

### Instructions for Oral Presentations

All rooms will be equipped with a laptop and a projector/smart board. The operating system will be Windows 11 Professional, and available software will be Microsoft Office 365 (including MS Word, MS PowerPoint, MS Excel), Adobe Acrobat, Windows Media Player, and VLC media player).

### Oral Paper Sessions

Oral presentations will be 10 minutes in duration, with an additional 5 minutes allocated for questions and answers. Presenters are requested to submit the Microsoft PowerPoint slides of their presentations prior to the given deadline.

### Presentation Guidelines (available on IPRC 2025 website)

1. The accepted abstract must be presented as an oral presentation at the conference by the authors. All presentations should be presented physically.



2. Only the presented abstracts will be included in the final version of the abstract book. The abstracts accepted and not presented will be removed from the final version of the abstract proceedings of IPRC 2025.
3. All the authors of an accepted abstract who will be presenting at the conference must complete paid registration at the full rate. If paid registration is not completed, the abstract will be removed from the conference program and proceedings.
4. Each presenter will be given 10 minutes to present their oral presentation and an additional 5 minutes will be allocated for a question-and-answer session with a total of 15 minutes. Please ensure that you stick to the time allocated. You will be requested to stop the presentation if you exceed 10 minutes.
5. All the oral presentations should be prepared in PowerPoint, and it is advised to use the IPRC PowerPoint Template given at the IPRC 2025 website <https://conf.kln.ac.lk/iprc/index.php/guidelines/presentation-guidelines>
6. The first slide of the presentation should include the presentation title, abstract ID, name(s) of the author(s), and the affiliation/s of the author/s and underline the names of presenter(s).
7. Include your abstract ID in the first slide of your presentation as shown here: IPRC\_25\_Abstract ID (Ex: IPRC\_25\_123)
8. The authors mentioned in the abstract should make the presentation.
9. The authors must use the PowerPoint template given by the FGS to make their presentations.
10. Any photographs/images used in PowerPoint should be of adequate resolution. Videos must not be used in the presentation. If playing a video is essential for your presentation, please contact FGS at least four days prior to the date of the conference.
11. The presenter is recommended to use graphs and figures instead of tables where necessary in the oral presentation.
12. Readable font colors should be used in the slides and it is advisable not to use light colors. i.e. light blue/light yellow.
13. Save the presentation file in the format <IPRC\_2025\_Abstract ID>, for example: IPRC\_2025\_156.
14. All submissions should be made directly via <https://sysfgs.kln.ac.lk/iprc-2025-presentation/> More details can be found on the IPRC conference website (<https://conf.kln.ac.lk/iprc/index.php> ).
15. The prepared presentation should be submitted on or before 8th November 2025
16. Your cooperation to make the symposium a success is highly appreciated.



## Abstract ID

- The letter string in the first position refers to the title of the conference - IPRC.
- Second position “25” refers to the year “2025”.
- The number in the third position refers to the number of the abstract ID.

*Example: IPRC/25/156*

## Name of the Authors

- The underlined name represents the presenting author, while the name with the superscript indicates the corresponding author

*Example: W.M.N.G. Weerakoon, P.Y. Panditha, T. Manilgama, D.D. Sakalasuriya,  
K.N. Seneviratne, D. Abeykoon, and N. Jayathilaka\**

## Key to the Session Identification

**Example:**

**MO/01/K013/11.00-01.00**

MO	= Morning Session
01	= Panel Number
K013	= Room Number
11.00 - 01.00	= Session Time



## **The University of Kelaniya (UoK)**

The University of Kelaniya is situated in the ancient and historic city of Kelaniya, a city reported to have been visited by Buddha in the 5<sup>th</sup> century BC. The University is conveniently located just outside the municipal limits of the capital city, Colombo, near Colombo-Kandy Road. The University of Kelaniya has its origin in the historic Vidyalkara Pirivena, founded in 1875 as a center of learning for Buddhist monks. It was one of the two great national centers of traditional higher learning, heralding the first phase of the national movement and national resurgence. With the establishment of modern Universities in Sri Lanka in the 1940s and 1950s, the Vidyalkara Pirivena became the Vidyalkara University in 1959, later the Vidyalkara Campus of the University of Ceylon in 1972 and, ultimately, the University of Kelaniya in 1978.



## **The Faculty of Graduate Studies (FGS)**

The FGS coordinates with all the Boards of Study in the university, offering research degrees, degrees with only coursework or coursework and research. All the postgraduate degree programs offered by the FGS conform to the relevant Sri Lanka Qualification Framework (SLQF) guidelines. The FGS specifies requirements for postgraduate admission and establishes and regulates standards with respect to the quality of postgraduate teaching and research. The FGS also promotes intra-faculty, inter-faculty, inter-university and international collaborations in postgraduate teaching and research. The quality of postgraduate research projects of the students is strictly monitored by a proposal presentation, biannual progress reports and progress presentations. The FGS consists of Boards of Study established based on the subject areas.

### **Boards of Study of the Faculty of Graduate Studies:**

- Board of Study in Commerce and Business Management
- Board of Study in Computing
- Board of Study in Digital Learning
- Board of Study in Humanities
- Board of Study in Medical Sciences
- Board of Study in Multidisciplinary Studies
- Board of Study in Science
- Board of Study in Social Sciences
- Board of Study in Technology

### **International Collaborations:**

The Faculty of Graduate Studies offers the following programs in foreign countries

- MBA, MPhil, and PhD programs in Bangladesh
- Master of Business Studies Program in China
- Master of Arts in Buddhist Studies Program in Malaysia



## Table of Contents

About IPRC 2025 .....	i
Message from the Vice-Chancellor .....	ii
Message from the Dean of the Faculty of Graduate Studies .....	iii
Message from the Chairman of the Research Council.....	iv
Profile of the Keynote Speaker – Prof. Piergiuseppe Morone.....	v
Plenary Speaker - Prof. Janaka Yasantha Ruwanpura.....	vii
Plenary Speaker - Prof. Channa De Silva .....	viii
Plenary Speaker - Prof. Jane E. Stewart .....	x
Plenary Speaker - Dr. Rajesh Shah.....	xii
Sessions Chairs.....	xv
Panel of Reviewers.....	xvi
A Special Note about the Program Book .....	1
IPRC 2025 Information .....	2
Instructions for Oral Presentations.....	3
Oral Paper Sessions.....	3
The University of Kelaniya (UoK) .....	6
The Faculty of Graduate Studies (FGS) .....	7
Table of Contents.....	8
Program Overview.....	9
Parallel Sessions & Plenary Sessions Schedule.....	10





## Program Overview

13<sup>th</sup> November 2025

Time	Venue	Activity
<b>Inauguration Ceremony</b>		
08.15 am - 08.45 am	Faculty of Commerce and Management Studies	<b>Registration</b>
08.45 am - 08.50 am	Auditorium - Faculty of Commerce and Management Studies	<b>Arrival of Guests</b>
08.50 am - 08.55 am		<b>Lighting of the Traditional Oil Lamp</b>
08.55 am - 09.00 am		<b>University Anthem</b>
09.00 am - 09.05 am		<b>Conference Video</b>
09.05 am - 09.10 am		<b>Welcome Address</b> Snr. Prof. Priyani Paranagama Dean, Faculty of Graduate Studies University of Kelaniya, Sri Lanka
09.10 am - 09.15 am		<b>Address by the Chairman of the Research Council</b> Prof. Sachith Mettananda
09.15 am - 09.20 am		<b>Address by the Chief Guest</b> Senior Prof. Nilanthi Renuka de Silva Vice-Chancellor, University of Kelaniya, Sri Lanka
09.20 am - 09.45 am		<b>Keynote Address</b> Prof. Piergiuseppe Morone Professor of Economic Policy Department of Law and Economics Unitelma Sapienza – University of Rome, Italy
09.45 am - 09.55 am		<b>Partnership promotional videos</b>
09.55 am - 10.00 am		<b>National Anthem and End of the Inauguration Ceremony</b>
10.00 am - 10.30 am	T2 - Faculty of Commerce and Management Studies	Refreshments
<b>Parallel Sessions &amp; Plenary Sessions</b>		
10.30 am - 12.45 pm		<b>Parallel Sessions &amp; Plenary Sessions</b>
12.45 pm - 01.15 pm	T2 - Faculty of Commerce and Management Studies	<b>Lunch</b>
01.15 pm - 03.00 pm		<b>Parallel Sessions &amp; Plenary Sessions</b>
03.00 pm - 03.15 pm	T2 - Faculty of Commerce and Management Studies	<b>Tea</b>
03.15 pm - 06.00 pm		<b>Parallel Sessions &amp; Plenary Sessions</b>

### Key to the Venues

- N3 Building - Faculty of Graduate Studies Ground Floor: Pre-conference registration
- Ananda Patabendige Hall - Auditorium: Faculty of Commerce and Management Studies
- T2 - Faculty of Commerce and Management Studies: Refreshments and Lunch



## Parallel Sessions & Plenary Sessions Schedule

**MO/01/Auditorium - Commerce and Management Studies (10.30 am – 12.45 pm)**

**Room No. - Auditorium, 3<sup>rd</sup> Floor, J2 Building, Faculty of Commerce and Management Studies**

**Conference Sub Theme - Science, Technology, Mathematics, and Medicine (STEM)**

Time		Plenary Session One		
	10.30 - 11.30	<b><i>Plenary Session One – “Igniting Research Excellence: Building the Next Generation University for Global Impact”</i></b> <b>Prof. Janaka Yasantha Ruwanpura - Schulich School of Engineering, Department of Civil Engineering, University of Calgary, Canada</b> <b>Ph.D., Construction Engineering and Management – University of Alberta, Canada, M.Sc., Construction Management – Arizona State University, USA, B.Sc. (Hons), Quantity Surveying – University of Moratuwa, Sri Lanka</b>		
Moderator	Time	Abstract ID	Presenter	Title
<b>Session Chairs</b>  Snr. Prof. N. Jayathilaka  Prof. Jeewantha Premaratne  <b>Session Coordinator/s</b> Ms. F.R.A. Razack	11.30 – 11.45	IPRC/25/142	<u>W.D.J.W. Gunawardana</u> , I.C. Perera, C. Witharana, N.D.A. Wageesha and S.A. Gunawardena*	Essential trace elements; zinc (Zn), selenium (Se) & manganese (Mn) in commonly consumed Sri Lankan commercial rice ( <i>Oryza sativa</i> L.)
	12.00 – 12.15	IPRC/25/202	<u>D.B.U.I. Danansuriya</u> , M.A.R.L. Samaraweera, B.C. Liyanapathirana, K.M.D.C. Jayathilaka, L.B.D.R.P. Wijesundera and W.G.C. Kumaraage*	Effect of particle size on optoelectronic properties of chemical bath deposited cadmium sulfide thin films
	12.15 – 12.30	IPRC/25/215	<u>M.W.K.A. Amarasena</u> , N.G.D.S. Abeyrathne, K.P.M. Perera, J.A. Liyanage, P.L.R.A. Perera and W.P.R.T. Perera*	Investigation of toxic metal contamination in upcountry agricultural soil, vegetables, and water: A study from Nuwara Eliya District, Sri Lanka



	12.30 – 12.45	IPRC/25/226	<u>D.D. Sakalasuriya</u> , N. Jayathilaka, and N.A.K.P.J. Seneviratne*	Innovative application of the Criegee oxidation mechanism to differentiate refined coconut oil produced from fresh crude coconut oil and used coconut oil.
--	---------------	-------------	---	---



**EV/01/ Auditorium – Commerce and Management Studies (1.15 pm-3.00 pm)**

**Room No. – Auditorium, 3<sup>rd</sup> Floor, J2 Building, Faculty of Commerce and Management Studies**

**Conference Sub Theme – Science, Technology, Mathematics and Medicine (STEM)**

Time		Plenary Session Two		
	01.15 – 1.45	<p><b><i>Plenary Session Two – “Artificial Intelligence in Chemistry Research: Transforming Discovery, Design, and Education”</i></b></p> <p><b>Prof. Channa De Silva – Professor of Chemistry, Head of the Department, Department of Chemistry &amp; Physics, Western Carolina University, USA</b></p> <p>Ph.D., Chemistry - University of Arizona, USA, B.S., Chemistry - University of Kelaniya, Sri Lanka</p>		
Moderator	Time	Abstract ID	Presenter	Title
<b>Session Chairs</b>  Prof. Suranga Wickramarachchi  Dr. A.M.D.M.B. Abeykoon  <b>Session Coordinator/s</b>  Ms. F.R.A. Razack	02.00 – 02.15	IPRC/25/130	<u>J.M.P. Ayeshmanthi</u> , H.M.L.P.B. Herath and K.A.K.P. Perera*	Assessment of antioxidant, antibacterial, and toxicity profiles of the Sri Lankan young tall coconut ( <i>Cocos nucifera</i> L.) variety for its potential as a future therapeutic agent in wound healing
	02.15 – 02.30	IPRC/25/165	<u>A. Ismail</u> , N. Sandamini*, and Z. Zakariya	Investigating phytochemical composition in abiotic stress responses of <i>S. androgynous</i> leaf extracts; analysis of anti-diabetic, anti-bacterial potential
	2.30 – 2.45	IPRC/25/268	<u>J.M.Y.A. Jayasundara</u> *, H.M. Gammudaly, <u>G.D.R. Hansika</u> , T.K.D.L.S. Aberathna, M.G.D.U. Warnakulasooriy, D.H.J.P.P. Nethmini, R.H. Kaushalya, J.A.U. Piyumi, G.J.J. Gunawardana, <u>A.V.R.C. Banduwardena</u> and N. Jayathilaka	Nutritional assessment of dried fish varieties commonly consumed in Sri Lanka: Implications for protein and salt intake



	02.45 – 03.00	IPRC/25/248	<u>K.G. Sanath Madushantha</u> <sup>1</sup> , U.H.P. Jeewanthi, Nilaksha Navod, D. Perera, N. Jayathilaka and P.A. Paranagama*	Neuroprotective potential of <i>Salicornia brachiata</i> against alzheimer's disease and oxidative stress induced by aluminium chloride in Wistar rats
	03.00 – 03.15	IPRC/25/161	S.A.N. Rashani, <u>A.V. Batawala</u> * and K.D.R.R. Silva	Dietary intake of Sri Lankan university athletes: A cross-sectional pilot study specific to Western province



**MO/02/Board Room - Commerce and Management Studies (10.30 am – 12.45 pm)**

**Room No. - Board Room (J1 201), 2<sup>nd</sup> Floor, J1 Building, Faculty of Commerce and Management Studies**

**Conference Sub Theme – Social Sciences and Humanities 02 (SSH 02)**

Time		Plenary Session One		
	10.30 - 11.00	<b>Plenary Session Three – “Rendition of Similar Ragas in North Indian Classical Music”</b> <b>Dr. Rajesh Shah - Professor in Sitar, Department of Instrument, Faculty of Performing Arts, Banaras Hindu University, India</b> <b>Ph.D., BHU, Varanasi, India, M.Mus., BHU, Varanasi, India, B.Com., Gorakhpur University, Gorakhpur, India</b>		
Moderator	Time	Abstract ID	Presenter	Title
<b>Session Chairs</b>	11.00 – 11.15	IPRC/25/147	<u>බී.ඩබ්ලිව්.ආර්.ඩී. විජේරත්න*</u>	උඩරට නර්තන සම්ප්‍රදායේ භාවිත හස්ත මුද්‍රා පිළිබඳ සංඥාර්ථවේදී අධ්‍යයනයක්
	11.15 – 11.30	IPRC/25/29	<u>ටී.ජී.ඒ.එම්. ඉමල්ෂාහි ටැංවත්ත*</u>	කොහොඹාකංකාරි ශාන්තිකර්මය හා බැඳුණු ජල සංකල්පය ආශ්‍රිත රෝග නිවාරණය
Dr. Anuruddhika Kularatne	11.30 – 11.45	IPRC/25/74	<u>එම්. ඩී. දිල්හානි*</u>	සිංහල හා දෙමළ සම්මුඛවිවේක සංකීර්ණ කථන වාක්‍යයන්හි සම-විෂමතා
Dr. Achala Abeykoon	11.45 – 12.00	IPRC/25/280	<u>මෙන්මිකා කාරියවසම්*, ඒච්.ඒ. දිලුම් රත්නමාලා</u>	නූතන සිංහල බෞද්ධ සිනමාව ඔස්සේ ප්‍රතීයමාන වන ප්‍රවණතා පිළිබඳ විමර්ශනාත්මක අධ්‍යයනයක්
Dr. Mangala Pasquel	12.00-12.15	IPRC/25/157	<u>එච්.එම්.ඩී.එස්. හේරත්, සිතාරි තිලකරත්න*</u>	ජන සංගීත අධ්‍යාපනයෙන් සිසුන්ගේ සමාජීය හැකියා සංවර්ධනයට සිදුවන බලපෑම
<b>Session Coordinator/s</b>	12.15 – 12.30	IPRC/25/104	<u>R.M.C.S. Ranasinghe*</u>	Eco-digital harmony: Integrating digital transformation and green innovation for inclusive music development in Sri Lanka
Mr. B.N.R. Ariyaratna	12.30 – 12.45	IPRC/25/276	<u>Priyanka Bharde*</u>	Creating Professional and Sustainable <i>Kuchipudi Dance</i> Productions – Ekam Ardhanarishwaram



**EV/02/ Board Room - Commerce and Management Studies (1.15 pm – 3.00 pm)**

**Room No. - Board Room (J1 201), 2<sup>nd</sup> Floor, J1 Building, Faculty of Commerce and Management Studies**

**Conference Sub Theme – Social Sciences and Humanities (SSH 03)**

Moderator	Time	Abstract ID	Presenter	Title
<b>Session Chairs</b>  Prof. M.R.K.N. Yatigammana  Dr. Madusha Chandrasena	1.15 – 1.30	IPRC/25/28	<u>U.E. Liyanarathna*</u> , <u>M. Samarakoon</u>	Exploring the undergraduate students' perspectives on using AI-powered essay-writing bots in improving argumentative essay-writing skills
	1.45 – 2.00	IPRC/25/271	<u>W.R.P.M.D.U. Ranasinghe</u> and <u>M.D.B.P. Weerasinghe*</u>	Perceptions of teachers and students on the use of SMART boards in junior secondary classrooms in Sri Lanka
	2.00 – 2.15	IPRC/25/222	<u>W.U.S. Vaas*</u> and K. Dissanayake	Relationship between digital literacy and career adaptability of middle-aged and older employees with perceived organizational support as a moderator
	2.15 – 2.30	IPRC/25/208	<u>ජේ.ඒ. තරිඳු මාධව*</u>	කැලණිය විශ්වවිද්‍යාලයේ මානවශාස්ත්‍ර පීඨයේ කළමනාකරණ සහකාරවරුන්ගේ දෛනික කාර්යයන්හි කාර්යක්ෂමතාව වැඩි දියුණු කිරීම සඳහා කෘත්‍රීම බුද්ධිය AI තාක්ෂණය භාවිතා කිරීම
<b>Session Coordinator/s</b>  Mr. B.N.R. Ariyarathna	2.30 – 2.45	IPRC/25/32 (Online)	<u>Binuri Yasara Ruwanpura De Silva*</u>	The tender green: rewriting masculinity through digital environmental advocacy
	2.45 – 3.00	IPRC/25/277	<u>Shambhavi Pratika Bharade*</u>	<i>Dharma vs. Adharma: The Dramatic Importance of Pratinayakas in Kuchipudi Dance Tradition</i>





**EV/03/ Board Room – Commerce and Management Studies (3.15 pm 6.00 pm)**

**Room No. - Board Room (J1 201), 2<sup>nd</sup> Floor, J1 Building, Faculty of Commerce and Management Studies**

**Conference Sub Theme – Science, Technology, Mathematics, and Medicine (STEM)**

Moderator	Time	Abstract ID	Presenter	Title
<b>Session Chairs</b>  Prof. Sidath Liyanage  Dr. Chinthanee Weerakoon	3. 15 – 3.30	IPRC/25/54	<u>S.B.R.D. Dhananjalee</u> * and E.M.U.S.B. Ekanayake	An innovative computational approach to the transportation problem using MATLAB
	3.30 -3.45	IPRC/25/89	<u>D.G.S.P. Thilakarathne</u> * and H.D. Weerasinghe	A sustainable blockchain-based voting system for corporate-level elections
	3.45 – 4.00	IPRC/25/113	<u>M. Sivanjali</u> *, A.N. Arulpragasam and R.B. Marasinghe	Integration of technology in clinical education
	4.00 – 4.15	IPRC/25/138	<u>U.P.D.K. Sewwandi</u> * and D.M.P.V. Dissanayaka <sup>2</sup>	Investigating air quality in Colombo: A comparative study of web-based applications for air quality index prediction and forecasting
<b>Session Coordinator/s</b>  Mr. B.N.R. Ariyaratna	4.15 – 4.30	IPRC/25/173	<u>P.A.D.H.J. Gunathilaka</u> *, R.A.R.S. Rajapaksha, B.M.T. Kumarika, K.M.D.C. Jayathilaka, D.P. Perera, M.H.M.U.P. Herath, J.A. Liyanage and S.R.D. Kalingamudali	Cuffless hypertension prediction using pulse waveform analysis and deep learning
	4.30 – 4.45	IPRC/25/283	<u>R.N. Wijeweera</u> *	Deep learning-based identification of endemic and endangered fish species in Sri Lanka
	4.45 – 5.00	IPRC/25/195	<u>K.S. Samarawickrama</u> * and T.A.H. Dilpriya	A deep learning and mathematical approach for early prediction of chronic kidney disease in Sri Lanka with a secure web-based interface



	5.00 – 5.15	IPRC/25/207	<u>S.W.S. Hansika*</u>	Evaluating the role of computer-based IELTS examinations in promoting green practices and sustainable innovation in Sri Lanka's education sector
	5.15 – 5.30	IPRC/25/225	<u>N.D. Weerakoon*</u> and S.D. Dahanayaka	Prime gap insights: A Python-based implementation of the segmented sieve



**MO/3/ S5 –Commerce and Management Studies (10.30 am – 12.45 pm)**  
**Room No. – S5 Hall, Second Floor, J2 Building, Faculty of Commerce and Management Studies**  
**Conference Sub Theme – Social Sciences and Humanities**

Moderator	Time	Abstract ID	Presenter	Title
<b>Session Chairs</b>  Prof. Miriswatte Wimalagnana Thero  Dr. Vindya Weerawardhana  Dr. Anuradha Jayasinghe	10.30 -10.45	IPRC/25/256	<u>D.L. Dhammika*</u>	The career adaptability of English teachers with a Higher National Diploma in English in the Southern Province of Sri Lanka
	10.45 – 11.00	IPRC/25/174	<u>E.M.A.N. Ekanayake*</u>	The effectiveness of speaking strategies employed by learners of English as a second language aged 10-16
	11.00 – 11.15	IPRC/25/170	<u>N.A.L.D.R. Silva*</u>	Investigating the language assessment, literacy, and training gaps among teachers in English language in the secondary level of Sri Lankan state schools
	11.15 – 11.30	IPRC/25/247	<u>H.M.M.S. Karunarathne*</u> , E.C.V.D. Jayasuriya	Mother Tongue in the ESL Classroom: Navigating First Language Use in University-Level English Teaching in Sri Lanka
<b>Session Coordinator/s</b>  Ms. J.H.A.C.S. Ekanayaka	11.30 – 11.45	IPRC/25/218 (Online)	<u>Sujiththa Karthikeyan*</u>	The impact of Tamil feature geometry in the acquisition of English segmental phonology by Tamils
	11.45 – 12.00	IPRC/25/86	<u>H.W.B.I. Sampath*</u>	Are the Two Meaning Levels Discussed in Siyabasalakara a Reflection of Dhvani or Anumiti?
	12.00 – 12.15	IPRC/25/87	<u>H.W.B.I. Sampa*</u>	The Usage of the Concept of Vakrokti, the Crooked Speech in the Practical Criticism in Sinhala
	12.15 – 12.30	IPRC/25/111	<u>M. GnanaLoka*</u>	Lost Sanskrit verses of Vajirabuddhiṭikā Nidānavañṇanā
	12.30 – 12.45	IPRC/25/139	<u>B. Lakshika Madushani*</u>	A Phonological Study of Minimal Pairs in Sri Lankan Sign Language



**EV/4/ S5 –Commerce and Management Studies (1.15 pm – 03.00 pm)**

**Room No. – S5 Hall, Second Floor, J2 Building, Faculty of Commerce and Management Studies**

**Conference Sub Theme – Science, Technology, Mathematics and Medicine (STEM)**

Moderator	Time	Abstract ID	Presenter	Title
<b>Session Chairs</b>  Dr. L.P.N.D. Premarathna  Dr. Dhakshika Wanniarachchi	1.15 – 1.30	IPRC/25/150	<u>J.A.D.M. Dharmathilaka*</u> , J. Adassuriya, K.P.S.C. Jayaratne and J.L. Gutiérrez	Refined stellar modelling and V-band photometric calibration of the eclipsing $\delta$ Scuti binary system KIC 6629588
	1.30 – 1.45	IPRC/25/211	<u>W.D.A.C.H. Costha*</u> , K.M.D.C. Jayathilaka, W. Siripala and R.P. Wijesundera	Growth of Cu <sub>2</sub> O films in acetate and hydrogen peroxide baths: A comparative study of photoresponses in a photoelectrochemical cell
	1.45 – 2.00	IPRC/25/196	<u>D.G.D.M. Weerasinghe*</u> , M.I.U. Weerasinghe and G.R.A. Kumara	Investigation of N520 dye sensitization in dye-sensitized solar cells using SnO <sub>2</sub> /ZnO composite
	2.00 – 2.15	IPRC/25/236	<u>H.P.S.M. Caldera*</u> and S.P.D.S.S.K. Karunarathna	The effect of paraxial approximation in vision correction: Limitations and implications for optical design
<b>Session Coordinator/s</b>  Ms. J.H.A.C.S. Ekanayaka	2.15 – 2.30	IPRC/25/199	<u>P.C.B. Dias*</u> , C.N. Walpita, E.M.U.W.J.B. Ekanayake and Teale Phelps Bondaroff	A tech-driven strategy for sustainable sea cucumber fisheries management in Sri Lanka
	2.30 – 2.45	IPRC/25/180	<u>K.W.M.N.S. Wickramasinghe*</u> , W.A.A.M. Weragoda and L.B. Dunsford	Determinants of ribbed smoke sheet quality in smallholder sector: A case study of the Mawanella Secretariat Division, Sri Lanka
	2.45 – 3.00	IPRC/25/190	<u>A. Prasad*</u> , L.A.J. Rajakaruna, P. W. Samarasekere*	A sustainable and eco-friendly approach for fulfilling the nitrogen fertilizer requirement in the agricultural Sector



**EV/06/ S5 –Commerce and Management Studies (3.15 pm – 06.00 pm)**

**Room No. - S5 Hall, Second Floor, J2 Building, Faculty of Commerce and Management Studies**

**Conference Sub Theme – Science, Technology, Mathematics and Medicine (STEM)**

Moderator	Time	Abstract ID	Presenter	Title
<b>Session Chairs</b>	3.15 – 3.30	IPRC/25/129	<u>A.P.N. Thathsarani</u> , K.A.D.D. Sakunthala*, W.P.R.T. Perera, W.A.P.J. Premaratne and J.A. Liyanage	Impact of chemical fertilizer application on the availability of toxic metals for uptake by paddy crops
	3.30 – 3.45	IPRC/25/128	<u>H.W.L. Fonseka</u> , D.A.D.A. Daranagama*, R.M.C.S. Ratnayake and L.J.S. Undugoda	Screening of polycyclic aromatic hydrocarbon utilization ability of <i>Trichoderma koningiopsis</i> isolated from Sapugaskanda industrial zone
	3.45 – 4.00	IPRC/25/244	<u>R.M.D.H. Rathnayake</u> * and D.T.P.S. Dharmawardhana	Assessing the use of organic fertilizers in Sri Lanka's paddy sector: practices, challenges, and impacts
Dr. Chamila Kadigamuwa	4.00 – 4.15	IPRC/25/41	<u>Vihara Samiduni Jayasinghe</u> , Thilomi Samarakoon* and Chamini Hemachandra	Impacts of polyethylene terephthalate microplastic fibers on the freshwater zooplankton <i>Moina macrocopa</i>
<b>Session Coordinator/s</b>	4.30 – 4.45	IPRC/25/12	<u>M.D. Edirisuriya</u> *, N.W.J.S. Chathuranga, G.H.A.B. Sandeepani, W.L.C. Niranga, G.I. Dilukshi, M.G.C. Sandunika and N.S.A.S.N. Senarath	Nutritional status and perceived barriers for nutrition among patients with cancer at a selected hospital in Sri Lanka
	4.45 – 5.00	IPRC/25/219	M.G.D.V.K. Kiridana, <u>P.D.M.K.C. Pathirage</u> *, R. Karunathilake and G. Vidanapathirana	Association between gestational weight gain (GWG) and neonatal birth weight (NBW) in a Sri Lankan maternal cohort
	5.00 – 5.15	IPRC/25/133	R.M.C.S. Ratnayake*, D.A.D.A. Daranagama and <u>M.V.S. Indrakeerthi</u>	Morpho-molecular characterization and cultivation potential of the wild edible mushroom <i>Lentinus squarrosulus</i> from the wet zone of Sri Lanka
	5.15 – 5.30	IPRC/25/131	<u>P.S.I.U. Jayarathne</u> , L.B. Dunsford* and W.M.M. Fernando	Effect of roasting temperature and time on caffeine retention in Sri Lankan Robusta coffee ( <i>Coffea canephora</i> ) beans
	5.30 – 5.45	IPRC/25/203	<u>P.D.N.V. Alwis</u> * and I.C. Perera	Microbial synergy in hydrocarbon breakdown: <i>Bacillus</i> sp. and <i>Brucella</i> sp. driving n-octacosane degradation



	5.45 – 6.00	IPRC/25/267	<u>U.H. Poornima Jeewanthi</u> , Nilaksha Navod, Sanath Madushantha, Dinithi Sakalasuriya, Mukesh B. Chawda, Ketan M. Bhapkar, R.V. Gudi, S. Wickramarachchi, Kapila N. Seneviratne, N. Jayathilaka and P.A. Paranagama*	Neuroprotective effect of <i>Rajata Bhasma</i> against aluminum chloride-induced alzheimer's disease and oxidative stress in Wistar rats
--	-------------	-------------	--	--



**MO/04/ MBUS Hall – Commerce and Management Studies (10.30 am – 1.00 pm)**

**Room No. – MBUS Hall, J2 Building, 1<sup>st</sup> Floor, Faculty of Commerce and Management Studies**

**Conference Sub Theme – Accounting, Business, and Management**

Moderator	Time	Abstract ID	Presenter	Title
<b>Session Chairs</b>	11.00 – 11.15	IPRC/25/92	<u>H.M.B.I. Herath</u> *	Factors affecting the life insurance policy lapsation A study focused on life insurance policy discontinued customers in Kandy district
Prof. M.J.M Razi	11.15 – 11.30	IPRC/25/187	<u>H.G.K.N. Bandara</u> *, B.W.R. Damayanthia and S. Heenkenda	Challenges faced by rural Agri-based businesses in Sri Lanka: A qualitative study
Dr. Prabhashini Wijewantha	11.30 – 11.45	IPRC/25/96 (Online)	<u>S. Manjula</u> *, L. Mayuran and T. Thasika	Moderating effect of job specialization on the relationship between employee perceptions of high-performance work systems and job performance in the Sri Lankan apparel sector
<b>Session Coordinator/s</b>	11.45 – 12.00	IPRC/25/100 (Online)	<u>S. Shamini</u> *, T. Thasika, and L. Mayuran	High-performance work practices and employee innovative performance in Sri Lanka's banking sector: The moderating role of knowledge sharing
Ms. M.A.A. Dias	12.00 – 12.15	IPRC/25/291	K.G.C. Priyanthi Menike, D.K.Y. Abeywardhana, <u>S. Nivetha</u> *	Impact of ESG Performance on Capital Structure: Evidence from Sri Lanka





**EV/07/ MBUS Hall –Faculty of Graduate Studies (1.15 pm – 3.15 pm)**

**Room No. – MBUS Hall, J2 Building, 1<sup>st</sup> Floor, Faculty of Commerce and Management Studies**

**Conference Sub Theme – Science, Technology, Mathematics and Medicine (STEM)**

Moderator	Time	Abstract ID	Presenter	Title
<b>Session Chairs</b>  Dr. Mahendra Gunawardena	1.15 – 1.30	IPRC/25/259	<u>A.P. Anoma Jayasiri*</u> and W.D. Ratnasooriya	Hypolipidemic potential of <i>Karavyadee Kvatha</i> poly-herbal formula
	1.30 – 1.45	IPRC/25/260	<u>A.P. Anoma Jayasiri*</u> and W.D. Ratnasooriya	Evaluation of hypolipidaemic activity and safety of <i>Arogyawardhani wati</i> : Ayurveda formula
	1.45 – 2.00	IPRC/25/156	<u>K.A.K.P. Perera*</u> , T. Manilgama, D.D Sakalasuriya, N.A.K.P.J. Seneviratne and N. Jayathilaka	Oxidative stress modulation and macromolecular protection by selected Sri Lankan ethnomedical plants
<b>Session Coordinator/s</b>  Dr. Jayangika Dahanayake	2.00 – 2.15	IPRC/25/272	<u>N. Wathsala</u> , N. Gunathilaka*, K. Dayasiri, V.N. Mudalpath, D. Samaranayaka, D. Jayakody, N.K. Gunawardena and L.D. Amerasinghe	Potential risk factors for transmission of intestinal nematodes infections and parental awareness in a selected paediatric population in Gampaha District, Sri Lanka
	2.15 – 2.30	IPRC/25/237	T.V. Wijethunga*, <u>R.D. Gallage</u> , B.V.D.S. Baddevithana, W.D.S.E. Abeykoon and L.P.M.M.K. Pathirage	Countering lung cancer in Sri Lanka: The <i>Beedi</i> obstacle
	2.30 – 2.45	IPRC/25/23	<u>Y. Ranasinghe</u> , N. Gunathilaka*, D. Jayakody and W.W.P. Rodrigo	Effect of cement types on the oviposition behavior of dengue vectors at urban setup
M. A. A. Dias	2.45 – 3.00	IPRC/25/93	<u>T.N. Siriwardana</u> , N. Gunathilaka*, S. Erathna, W. Rodrigo, H. Gunasekara and B. Sumanasena	Study on the diversity of microbial community in cutaneous lesions with leishmaniasis infection



**EV/08/MBUS Hall - Commerce and Management Studies (03.15 pm-6.00 pm)**  
**Room No. – MBUS Hall, J2 Building, 1<sup>st</sup> Floor, Faculty of Commerce and Management Studies**  
**Conference Sub Theme – Science, Technology, Mathematics and Medicine (STEM) - 03**

Moderator	Time	Abstract ID	Presenter	Title
<b>Session Chairs</b>  Prof. Channa De Silva  Prof. Suranga Wickramarachchi	03.15 – 03.30	IPRC/25/213	S.S. Melani, <u>M.N.C. Rathnayaka*</u> , V. Thenuha, A.V. Weththasinghe, G.Y.N. Karunarathne, C.T.N. Dissanayake and N.D.K. Ranadeva	Evaluation of toxicity of a crude extract combination of <i>Cinnamomum verum</i> , <i>Curcuma longa</i> , and <i>Ocimum tenuiflorum</i> using the brine shrimp lethality assay
	03.30 – 03.45	IPRC/25/246	<u>S.A.P. Ravinath*</u> , A.V.P.H. Abeyrathne, G.A.L.H. Galaudaarachchi, A. Sivasubramaniam, R.A.A.I. Ranasinghe, C.T.N. Dissanayake, and L.M.D. Deva Adithiya	Assessment of cytotoxic potential of <i>Erythrina variegata</i> bark extracts from different Sri Lankan geographical zones: Using brine shrimp lethality assay
<b>Session Coordinator/s</b>  M. A. A. Dias	03.45 – 04.00	IPRC/25/198	<u>N.M.S. Jayasekara*</u> , G. Nishanthan and D.C.T. Dissanayake	Comparative analysis of proximate composition in <i>bêche-de-mer</i> derived from wild and farmed sandfish ( <i>Holothuria scabra</i> )
	04.00 – 04.15	IPRC/25/250	<u>Nilaksha Navod</u> , P.A. Paranagama*, N.A.K.P.J. Seneviratne, N. Jayathilaka and Lankani Hettigoda	Phytochemical profiling, and <i>in vitro</i> antioxidant, anti-inflammatory, and enzyme inhibition potentials of a traditional Ayurvedic herbal tea
	04.45 – 05.00	IPRC/25/227	<u>G.L.S. Galgamuwa*</u> , G.A.S.M. Ganehiarachchi, R.M.T.B. Ranathunga and N.W.B.A.L. Udayanga	Assessment of mosquito vector competence and filarial parasite prevalence in the Galle district of Sri Lanka
	5.00 – 5.15	IPRC/25/94	U. Wimalasiri, <u>T.N. Siriwardana</u> , N. Gunathilaka* and O.V.D.S.J. Weerasena	Cloning of melittin peptide coding sequence with anti-leishmanial properties in <i>Priestia megaterium</i> : A paratransgenic approach for leishmaniasis transmission control
	5.15 – 5.30	IPRC/25/274	T.N. Siriwardana, <u>N. Gunathilaka*</u> , M. Bopagoda, I.A. Hemachandra, S.P.	First locally acquired case of visceral leishmaniasis by <i>Leishmania orientalis</i> in Sri



			Karunarathne, R. Premaratna, N. Manamperi and N. Chandrasena	Lanka and entomological assessment of disease vectors in the case-reported location
	5.30 – 5.45	IPRC/25/85	M.H.B.S.M. Wanasinghe*, H.M. Gammudaly, <u>R.S.D. Senevirathne</u> , D.M.D.S. Dissanayake, <u>H.A.S. Dilkushi</u> , K.D.H.S. Madhushani, D.N.D.Z. Wickremasinghe, K.M.R.L. Fernando, H.A.D.D. Perera, P.D.B. Janadari, Tashmi Manilgama and N. Jayathilaka	Investigating post-harvest losses of black pepper seeds ( <i>Piper nigrum</i> ) in Gampaha District due to fungal infections and mitigation strategies



**MO/05/DBA Hall – Commerce and Management Studies (10.30 am – 12.45 pm)**

**Room No. – DBA Hall, 1<sup>st</sup> Floor, J2 Building, Faculty of Commerce and Management Studies**

**Conference Sub Theme – Social Sciences and Humanities**

Moderator	Time	Abstract ID9	Presenter	Title
<b>Session Chairs</b>	10.30 -10.45	IPRC/25/134	<u>B.H. Angammana</u> and C.R. Gunawardana	Barriers to accessing public services for rural ethnic minorities in Sri Lanka: A case study of a selected rural village
Prof. R.M Mahinda (Manjula Ranagalage)	10.45 -11.00	IPRC/25/115	<u>H.C.Y. Jayasinghe*</u>	The influences of biological inheritance and environmental conditions on personality development
Prof. M.R.K.N. Yatigammana	11.00 – 11.15	IPRC/25/77	<u>T.M.B.N. Thennakoon*</u>	Language, power, and persuasion: A humanistic exploration of business communication practices
<b>Session Coordinator/s</b>	11.30 – 11.45	IPRC/25/122	<u>H.M.U.S. Herath*</u> and M.N.V. Munasinghe	Transformation of social support network: How social media platforms influence the management of mental well-being in married women
S. P. H. Prabodhini	11.45 – 12.00	IPRC/25/191	<u>කේ.එස්. සිල්වා*</u>	ගංවතුර සඳහා සුදානම වැඩිදියුණු කිරීමට ජංගම දුරකථන භාවිතය: මාතර දිස්ත්‍රික්කයේ අවදානම් කණ්ඩායම් අතර ඩිජිටල් ප්‍රවේශය පිළිබඳ පර්යේෂණාත්මක අධ්‍යයනයක්



**EV/09/ DBA Hall – Commerce and Management Studies (1.15 pm – 03.00 pm)**  
**Room No. – DBA Hall, 1<sup>st</sup> Floor, J2 Building, Faculty of Commerce and Management Studies**  
**Conference Sub Theme - Social Sciences and Humanities (SSH 05)**

Moderator	Time	Abstract ID	Presenter	Title
<b>Session Chairs</b>	1.15 – 1.30	IPRC/25/123	<u>G.E. Kavirathna*</u>	Geospatial and temporal analysis of the environmental sustainability of urban development in suburban areas
Prof. R.M Mahinda (Manjula Ranagalage)	1.30 – 1.45	IPRC/25/167	<u>G.E. Kavirathna*</u>	Spatiotemporal correlation between urban vegetation health and surface water availability in Kandy
	2.00 – 2.15	IPRC/25/30	<u>J.M.S.S. Jayawardhana*</u>	The effect of seasonal rainfalls on tea industry: An analysis based on the major tea growing regions in Sri Lanka
	2.15 – 2.30	IPRC/25/245	<u>K.N. Tharanga*</u> and K.M. Alexander	Spatial design approaches for analyzing archaeological site data, with special reference to the miniature water garden in <i>Sigiriya</i> .
<b>Session Coordinator/s</b>	2.30 – 2.45	IPRC/25/14	<u>M.P.R. Medage*</u>	ක්‍රිස්තු වර්ෂ 18 සහ 19වන සියවස්වල බස්නාහිර සහ දකුණු පළාත් බෞද්ධ විහාරවල ප්‍රසාදානිමුඛයන්හි දැකගත හැකි යටත් විජිත ගෘහ නිර්මාණ ලක්ෂණ
S. P. H. Prabodhini	2.45 – 3.00	IPRC/25/119	<u>M.K. Manatunga*</u>	ශ්‍රී ලංකාවේ යටත්විජිත යුගයේ මුද්‍රණ කර්මාන්තයේ ආරම්භය හා විකාශය පිළිබඳ අධ්‍යයනයක්. (1737-1948)



**EV/10/ DBA Hall – Commerce and Management Studies (03.15 pm – 05.00 pm)**

**Room No. – DBA Hall, 1<sup>st</sup> Floor, J2 Building, Faculty of Commerce and Management Studies**

**Conference Sub Theme - Multidisciplinary Studies**

Moderator	Time	Abstract ID	Presenter	Title
<b>Session Chairs</b>  Prof. Deepika Amarasinghe	03.15 – 03.30	IPRC/25/99	<u>D. Jayakody</u> , N. Gunathilaka*, N. Perera, R. Alagiyawanna and S. Rajapaksha	Forensic entomological reveal of human cadavers colonized with insect lifecycle stages: A preliminary study from Gampaha District, Sri Lanka
	03.30 – 03.45	IPRC/25/35	<u>J.Y. Kumari</u> , N. Gunathilaka*, N. Manamperi, L.D. Amarasinghe, T.N. Siriwardana and D.G.I.C. Somaweera	Genetic characterization of phlebotomine sand flies ( <i>Diptera: Psychodidae</i> ) with different morphological features: Complementing morphological identification
<b>Session Coordinator/s</b>  S.P.H. Prabodhini	03.45 – 04.00	IPRC/25/04	<u>Kavinda Dyasiri</u> *, Indika Gawarammana and Shaluka Jayamanne	Parental knowledge, attitudes, and pre -hospital practices in paediatric snakebite management: A cross-sectional study from rural Sri Lanka
	04.00 – 04.15	IPRC/25/21	N. Gunathilaka* and <u>D. Jayakody</u>	Indicator framework for cutaneous leishmaniasis transmission risk in Sri Lanka using the Delphi-entropy weight method
	04.15 – 04.30	IPRC/25/22	N. Gunathilaka* and <u>D. Jayakody</u>	Spatio-temporal and climate sensitivity for typhus disease incidence in Sri Lanka from 2009-2023



**MO/06/ MBA Hall – Faculty of Commerce and Management Studies (10.30 am – 12.45 pm)**

**Room No. – MBA Hall, 2<sup>nd</sup> Floor, Faculty of Commerce and Management Studies**

**Conference Sub Theme – Social Sciences and Humanities**

Moderator	Time	Abstract ID	Presenter	Title
<b>Session Chairs</b>	10.30 -10.45	IPRC/25/26	<u>H.M.B.I. Herath*</u>	An evaluation of the TOE model factors influencing online training adoption among wellness and fitness service trainers in Sri Lanka
Snr. Prof. Susima Weligamage	10.45 -11.00	IPRC/25/168	<u>L.A.M. Hansani Pramila Udayakumari*</u> and H.M.S. Banda	The impact of examination anxiety on the academic performance of undergraduate students in state universities in Sri Lanka
	11.00 – 11.15	IPRC/25/235	<u>S. Harishanthan*</u> and B.S. Galdolage	Unlocking Sri Lanka's tourism potential through influencer marketing: A study of challenges and opportunities in promoting Sri Lanka as a tourist destination
<b>Session Coordinator/s</b>	11.15 – 11.30	IPRC/25/151	<u>S. Lukshitha*</u> and G.N. Simon	External auditors' perception of adopting computer-assisted audit techniques in Sri Lanka: Moderating effect of demographic factors
Isuru Sudharshana	11.30 – 11.45	IPRC/25/287	<u>K. Nathika*</u> and W.L. Viraj	Impact of corporate social responsibility (CSR) reporting on the financial performance of licensed commercial banks in Sri Lanka
	11.45 – 12.00	IPRC/25/288	<u>K.S.S Kumarasinghe*</u> , V.L. Weerawickrama	The relationship between fraud risk management practices and financial performance of banking sector in Sri Lanka
	12.00 – 12.15	IPRC/25/289	<u>J.M.D. Malshanee*</u> , V.L. Weerawickrama	The Impact of the Intellectual Capital on Financial Performance of Listed Insurance Companies in Sri Lanka
	12.15 – 12.30	IPRC/25/290	<u>K.A.S. Piyaruwan*</u> , W.L. Viraj	Impact of forensic accounting knowledge on fraud management: With special reference to the Sri Lankan context





**EV/11/ MBA Hall – Commerce and Management Studies (1.15 pm – 03.00 pm)**  
**Room No. – MBA Hall, 2<sup>nd</sup> Floor, Faculty of Commerce and Management Studies**  
**Conference Sub Theme - Social Sciences and Humanities (HSS)**

Moderator	Time	Abstract ID	Presenter	Title
<b>Session Chairs</b>	1.15 – 1.30	IPRC/25/65	<u>A.S.P. Pavey*</u>	Exploring the impact of digital technology on traditional storytelling conventions
Prof. M. J. M. Razi	1.45 – 2.00	IPRC/25/120	<u>C.D. Paranawithana*</u> , W.L.M.P. Weeraratne, H.K.C.R.J. Podirathna, H.P.S. Rashmika and M.G.S. Dilanth	Simulation of a queuing system using ARENA: A case study from the Sri Lankan retail industry
Snr. Prof. Susima Weligamage	2.00 – 2.15	IPRC/25/97	<u>B. Sanjeewa Maheshe Mendis*</u>	From the Scriptorium to the Microchip: Rethinking Medieval Educational Ethics for Digital Transformation and Sustainable Innovation
<b>Session Coordinator/s</b> Isuru Sudharshana	2.30 – 2.45	IPRC/25/148	<u>R.D.S.D. Ranasinghe*</u>	Student Preferences in the Technology Stream: A Study on Subject Choice and Influencing Factors at G.C.E. A/Level in Sri Lanka's Western Province



**MO/07/Board Room – Faculty of Graduate Studies (10.45 am – 12.45 pm) (Online)**

**Room No. – Board Room (N3 – 204), 1<sup>st</sup> Floor, Faculty of Graduate Studies**

**Conference Sub Theme – (Online) All Tracks**

Moderator	Time	Abstract ID	Presenter	Title
<b>Session Chairs</b>  Dr. L.P.N.D. Premarathna  <b>Session Coordinator/s</b>  Sandali	10.30 -10.45	IPRC/25/204 (Online)	<u>U.P.A.T. Shashindri*</u>	Digitalizing community mediation in Sri Lanka: A path toward effective and efficient dispute resolution
	10.45 -11.00	IPRC/25/166 (Online)	<u>C.W. Sahabandu*</u> and H.O.W. Peiris	Impact of heat transfer through porous media in enhanced oil recovery
	11.00 – 11.15	IPRC/25/278	<u>L. Chatterjee*</u>	Digitalisation of Historical Archives and Heritage Management Promoting Sustainable Development and Green Environment
	11.15 – 11.30	IPRC/25/163 (Online)	<u>Dharshini Shanmugam*</u>	Enhancing ESL Speaking Skills and Motivation through Digital Storytelling: A Case Study of a Sri Lankan Fine Arts Classroom
	11.30 – 11.45	IPRC/25/279	<u>A.K. Das*</u>	Digital Twin Systems for Green Infrastructure in the Industrial Domain: A Sustainable and Transformational Approach to Planning and Operations in Industries
	11.45 – 12.00	IPRC/25/285 (Online)	<u>H.M.N.N. Herath*</u> and Jayamal de Silva	The academic writing challenges of undergraduate students: A case study based on three selected science-based faculties at a state university in Sri Lanka
	12.00 – 12.15	IPRC/25/281	<u>M.S.A. Arif*</u> , and A. Jayamaha	Improving sustainable procurement in the context of the Bangladesh public sector organizations
	12.15 – 12.30	IPRC/25/57 (Online)	<u>P. Sachivathanan*</u> , M. Arunmaran* and K. Kannan	(m,n)-semi-regular open sets in bi-generalized topological spaces



**EV/12/ Board Room - Faculty of Graduate Studies (1.15 pm – 3.00 pm) (Online)**

**Room No. - Board Room (N3 – 204), 1<sup>st</sup> Floor, Faculty of Graduate Studies**

**Conference Sub Theme – (Online) All Tracks**

Time		Plenary Session Two		
	01.15 – 1.45	<b><i>Plenary Session Four – “Characterizing Patterns Associated with Airborne Microbial Communities in Forest and Grassland Ecosystems”</i></b>  <b>Prof. Jane E. Stewart – Associate Professor of Plant Pathology, Department of Agricultural Biology, College of Agricultural Sciences, Colorado State University, USA</b> <b>PhD (Washington State University), MS (University of Vermont), BS (University of Oregon)</b>		
Moderator	Time	Abstract ID	Presenter	Title
<b>Session Chairs</b>  Prof. Renuka Attanayake  Dr. Samanthi Jayawardhana  Dr. H.A. Kumudu Sumedha Sanjeewani  <b>Session Coordinator/s</b>  Sandali	01.45 – 02.00	IPRC/25/220 (Online)	<u>W.W.A.P.H. Fernando*</u>	The effectiveness of providing ChatGPT-based feedback to learners of English as a second language to improve syntactic proficiency
	02.00 – 02.15	IPRC/25/258 (Online)	<u>P. Vishnuka*</u>	The impact of using specialized AI for mastering creative writing in learning English as a second language (ESL): From copy to creativity
	02.15 – 02.30	IPRC/25/221 (Online)	<u>P. Hemija Sarawana*</u>	Comparative study of machine learning models for predicting crop recommendation in diverse soil conditions
	2.30 – 2.45	IPRC/25/257 (Online)	<u>Pabasara Ponnampereuma*</u>	Mrs. Arbuthnot in Oscar Wilde’s A Woman of No Importance, in the light of Kristeva’s motherhood concept of ‘Good Fairy’ in Victorian society
	02.45 – 03.00	IPRC/25/282	<u>S. Chatterjee*</u>	Post-humanist approach of Michael Jackson towards sustainable development and growth: A dream of healing the world



**EV/13/ Board Room – Faculty of Graduate Studies (3.15 pm 5.00 pm) (Online)**  
**Room No. - Board Room (N3 – 204), 1<sup>st</sup> Floor, Faculty of Graduate Studies**  
**Conference Sub Theme – (Online) All Tracks**

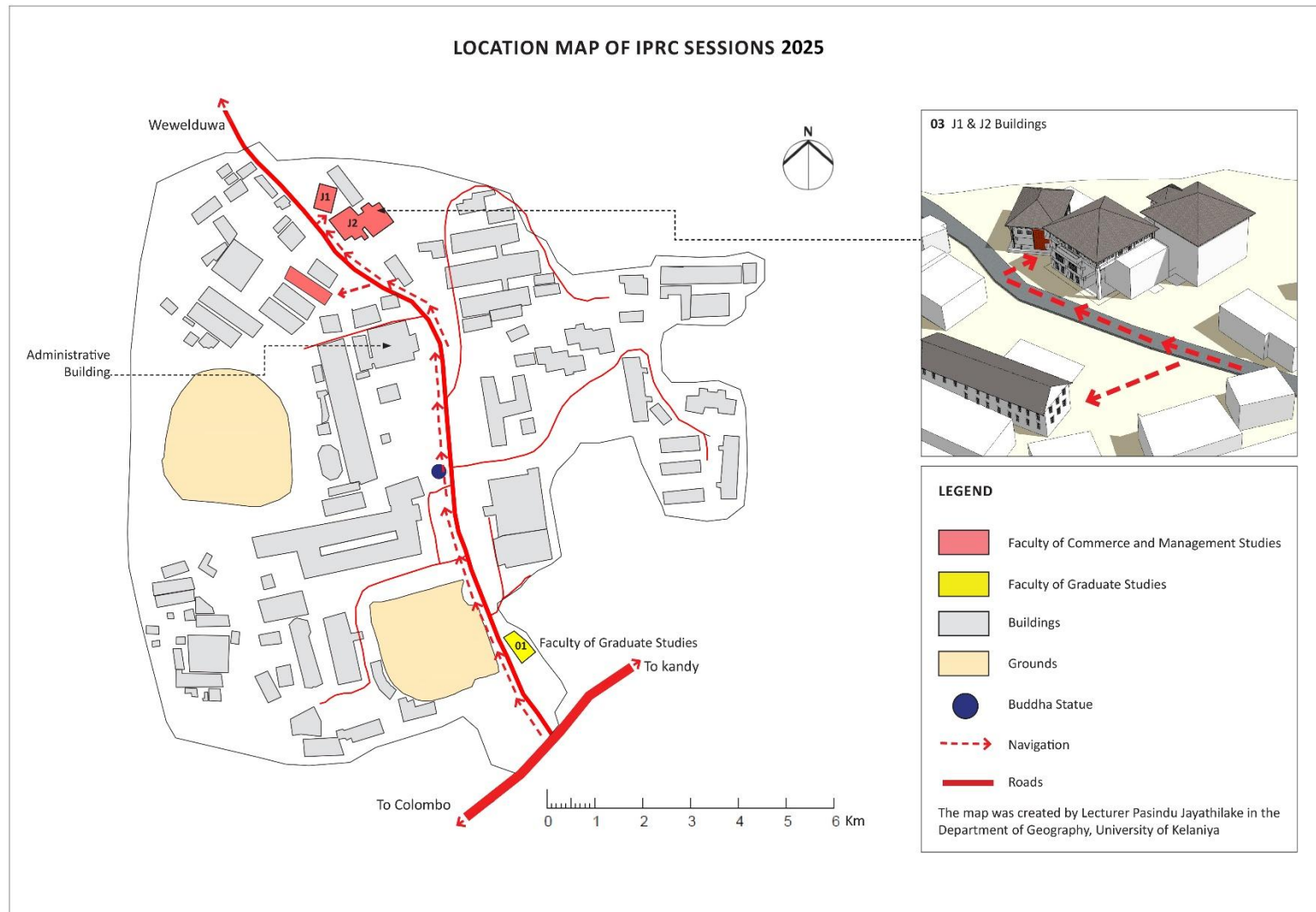
Moderator	Time	Abstract ID	Presenter	Title
<b>Session Chairs</b>  Dr. Vindya Weerawardhana  Dr. H.A. Kumudu Sumedha Sanjeewani	03.15 – 03.30	IPRC/25/145 (Online)	<u>Tehmina Anjum*</u> and Hina Ashraf	Sustainable crop protection using green-synthesized metal and metal oxide nanoparticles against <i>Fusarium oxysporum</i>
	03.30 – 03.45	IPRC/25/192 (Online)	<u>A.M.S.K. Krishantha</u> , T.P.S.R Guruge* and I.V. Kuruppu	Knowledge, attitudes, and practices on leptospirosis prevention: insights from rural farming communities in Kurunegala
	03.45 – 04.00	IPRC/25/42 (Online)	<u>Waheed Akram*</u> and Zainab Shabbir	Synthetic consortium of two <i>Bacillus</i> strains elicits induced defense responses in Pea plants against <i>Fusarium</i> wilt disease through metabolomic reprogramming
	04.00 – 04.15	IPRC/25/06 (Online)	<u>ඒ.එම්.ටී.ඩී අබේසිංහ*</u>	පුරාවිද්‍යා ඡායාරූපකරණයේ න්‍යායාත්මක පසුබිම පිළිබඳ අධ්‍යයනයක්
	04.15 – 04.30	IPRC/25/07 (Online)	<u>ඒ.එම්.ටී.ඩී අබේසිංහ*</u>	නූතන සුභාවිත ගිතයේ අනාගත වලංගුභාවය පිළිබඳ විමසුමක්
<b>Session Coordinator/s</b>  Sandali	04.30 – 04.45	IPRC/25/230	<u>Yashodya Ridmi Bandaranayake*</u>	A study on the effectiveness of foreignization as a strategy in translating cuisine-related terms
	04.45 – 05.00	IPRC/25/233	<u>අයි. මුණවිර*</u>	සිහිරි පද්‍යවල සඳහන් සර්ව නාම පිළිබඳ වාග්විද්‍යාත්මක අධ්‍යයනයක්
	05.15 – 05.30	IPRC/25/88 (Online)	<u>T. Thasika*</u> and L. Mayuran	Moderating effect of managerial job insecurity on the relationship between perceived overqualification and promotability of subordinates: A study in Sri Lanka's IT sector
	5.45 – 6.00	IPRC/25/96 (Online)	<u>S. Manjula*</u> , L. Mayuran1 and T. Thasika1	Moderating effect of job specialization on the relationship between employee perceptions of high-performance work



				systems and job performance in the Sri Lankan apparel sector
	6.00 – 6.15	IPRC/25/107 (Online)	<u>Ali Hassan*</u>	Synergistic biocontrol and induced resistance in rice against bacterial leaf blight by <i>Pseudomonas chlororaphis</i> and <i>Flavobacterium ginsenosidimutans</i> YTB16
	6.15 – 6.30	IPRC/25/32 (Online)	<u>Binuri Yasara Ruwanpura De Silva*</u>	The tender green: Rewriting masculinity through digital environmental advocacy
	6.30 – 6.45	IPRC/25/284	<u>Manoj Jinadasa*</u>	Breaking the Protocol: Why It Is Essential to Break Traditional Protocols and Redistribute Power



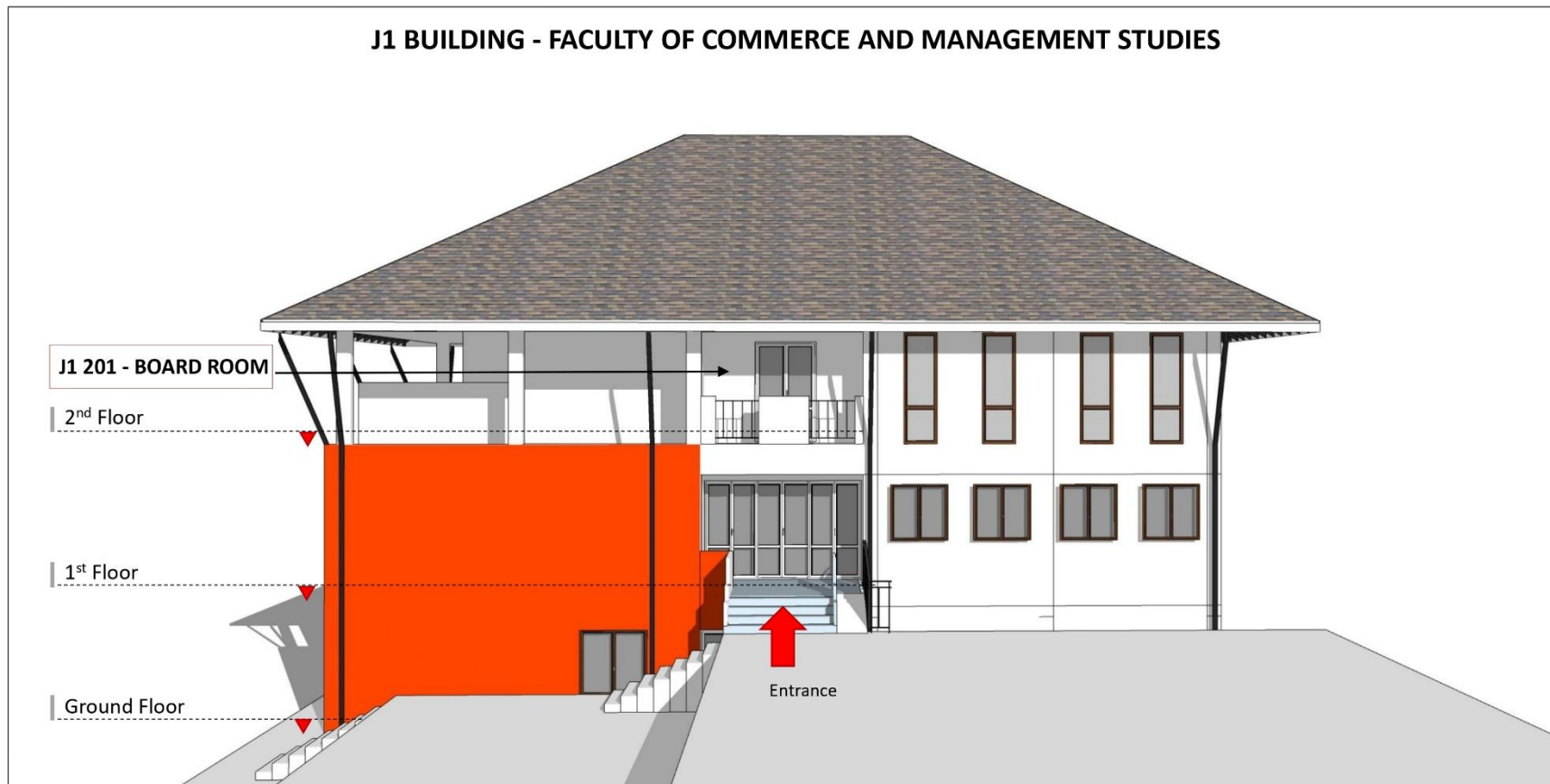
## Conference Venue



Directions to the Faculty of Graduate Studies: <https://shorturl.at/5if2m>



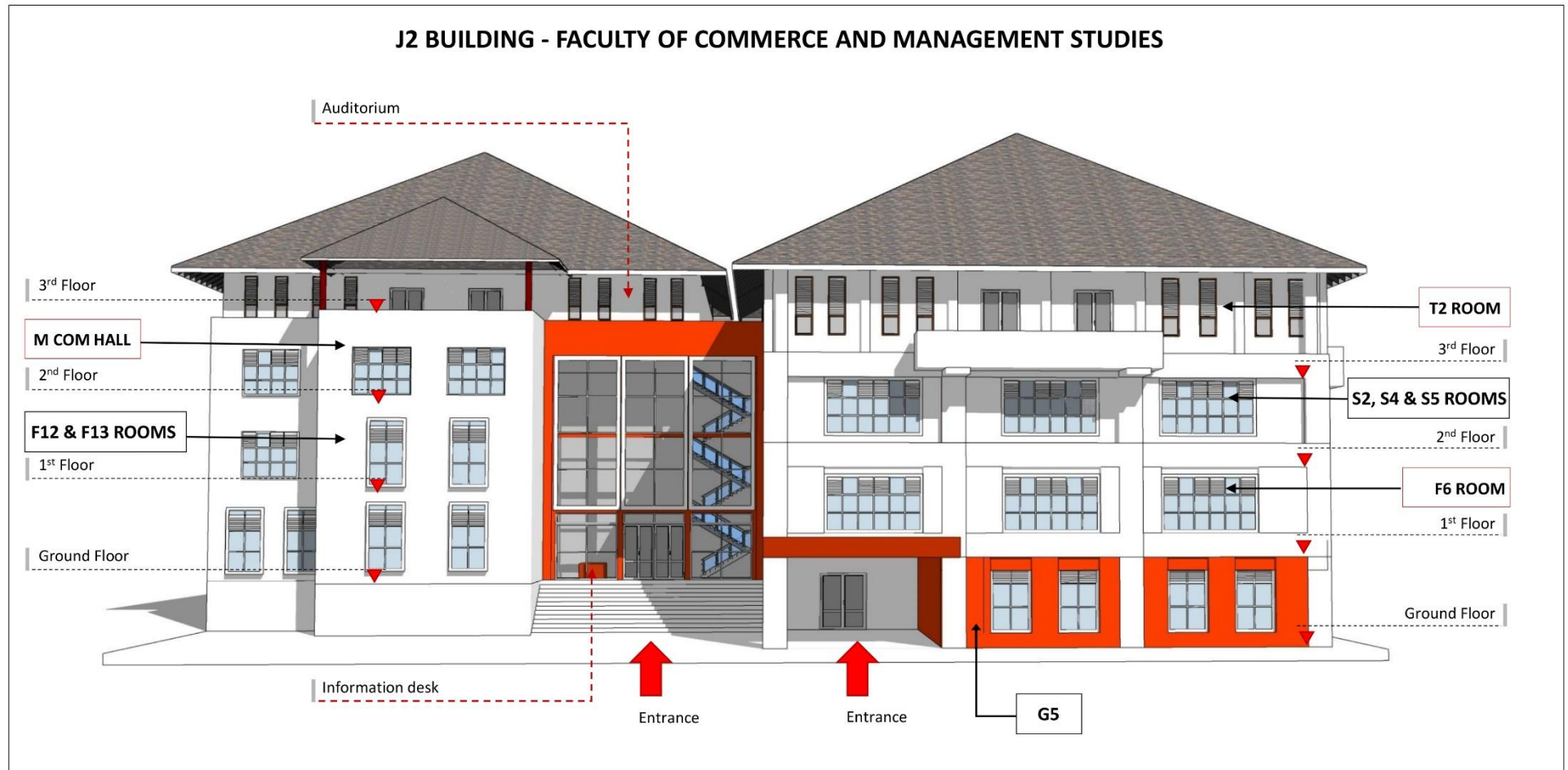
## J1 BUILDING - FACULTY OF COMMERCE AND MANAGEMENT STUDIES



The 3d view was created by Lecturer Pasindu Jayathilake in the Department of Geography, University of Kelaniya

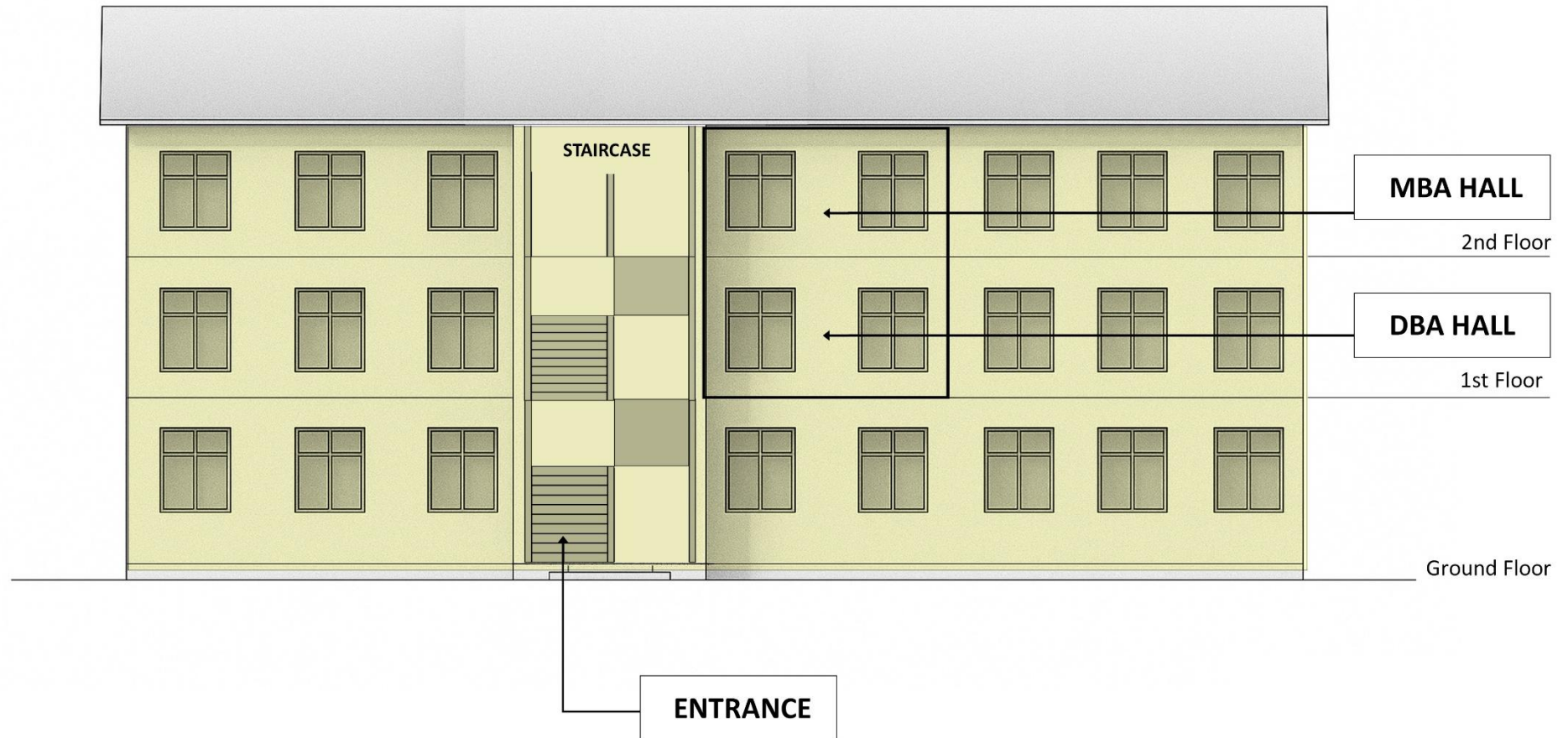
Directions to the J1 building, Faculty of Commerce and Management Studies: <https://shorturl.at/ZL0x9>

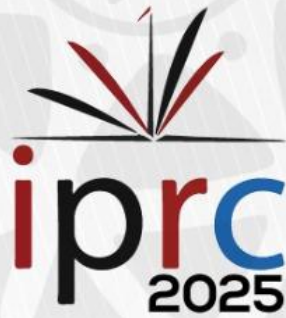




The 3D view was created by Lecturer Pasindu Jayathilake in the Department of Geography, University of Kelaniya

Directions to the J2 building, Faculty of Commerce and Management Studies: <https://shorturl.at/ZL0x9>





# 25<sup>th</sup> INTERNATIONAL POSTGRADUATE RESEARCH CONFERENCE (IPRC) 2025

Organized by  
Faculty of Graduate Studies  
University of Kelaniya  
Sri Lanka

## OUR PARTNERS

